

**BOOKCASES/BOOKSHELVES / METAL**

**Bookshelves**

High pressure laminated tops, electrostatic paint on shelves, metal, includes sliding book supports. 36" Wide x 66" High x 10" Deep, Single Face. Qualifying Standard: Wilson Stak.



KCDA No.	Color	U/M
<b>70288</b>	Egg	Ea
<b>70291</b>	Grey	Ea
<b>70289</b>	White	Ea

**Hon S Series Metal Bookcases**

Adjustable shelves open front type, recessed toe space. Heavy gauge metal. The weight capacity is 103 pounds per shelf. Hon, No Substitute.



- 2 Shelves = 29" High x 12-5/8" Deep x 34-1/2" Wide
- 3 Shelves = 41" High x 12-5/8" Deep x 34-1/2" Wide
- 4 Shelves = 59" High x 12-5/8" Deep x 34-1/2" Wide
- 5 Shelves = 71" High x 12-5/8" Deep x 34-1/2" Wide

KCDA No.	Description	Finish	Mfg. No.	U/M
<b>71046</b>	2 Shelves	Black	S30ABC	Ea
<b>71045</b>	2 Shelves	Charcoal	S30ABC	Ea
<b>71044</b>	2 Shelves	Grey, Light	S30ABC	Ea
<b>71040</b>	2 Shelves	Putty	S30ABC	Ea
<b>71080</b>	3 Shelves	Black	S42ABC	Ea
<b>71078</b>	3 Shelves	Charcoal	S42ABC	Ea
<b>71077</b>	3 Shelves	Grey, Light	S42ABC	Ea
<b>71060</b>	3 Shelves	Putty	S42ABC	Ea
<b>71061</b>	4 Shelves	Black	HS60ABC.P	Ea
<b>71059</b>	4 Shelves	Charcoal	HS60ABC.S	Ea
<b>71058</b>	4 Shelves	Grey, Light	HS60ABC.Q	Ea
<b>71051</b>	4 Shelves	Putty	HS60ABC.L	Ea
<b>71035</b>	5 Shelves	Black	S72ABC	Ea
<b>71033</b>	5 Shelves	Grey, Light	S72ABC	Ea
<b>71030</b>	5 Shelves	Putty	S72ABC	Ea
<b>71034</b>	6 Shelves	Black	S82ABC	Ea
<b>71036</b>	6 Shelves	Grey, Light	S82ABC	Ea
<b>71032</b>	6 Shelves	Putty	S82ABC	Ea

**BOOKCASES/BOOKSHELVES / WOOD**

**Bookcases**

Melamine thermal-fused laminate on industrial strength particleboard. Made with fir particleboard tops, bottoms, shelves and end panels. Floating tops define the tip from the end panels. Shelves are 36" wide by 16" deep. Adjustable leg levelers. Back match end panels so it can be visible from both sides. Qualifying Standard: Gavco Cambridge Series.



KCDA No.	Finish	Height	U/M
<b>71171</b>	Solar Oak	42", 3 Shelves	Ea
<b>71179</b>	June Mahogany	42", 3 Shelves	Ea
<b>71172</b>	Solar Oak	60", 5 Shelves	Ea
<b>71188</b>	June Mahogany	60", 5 Shelves	Ea
<b>71173</b>	Solar Oak	72", 6 Shelves	Ea
<b>71174</b>	Solar Oak	84", 7 Shelves	Ea

**Georgia Chair Bookcase**

Natural wood, 4 shelf, 3 adjustable, 36" w x 12" d x 48" h. Shelves and side panels are solid 13/16" thick oak and flush mounted. Back panel is 1/4" thick plywood. Georgia Chair, No Substitute.



KCDA No.	Mfg. No.	U/M
<b>71354</b>	3648	Ea

**Hon Bookcases**

36" wide x 11-1/2" deep with hardboard back panel. Tops feature radius trim made of hardwood. Thermal-fused laminate, over solid core, high-density particleboard, is abrasion and stain-resistant. 3/4" thick shelves adjust in 1-1/4" increments. Two shelves are fixed in 5 and 6 shelf units. Cam-lock fasteners and wood dowels. Equipped with four adjustable leveling glides. Optional extra shelves and doors are available. Meets or exceeds ANSI/BIFMA and ISTA performance standards. Hon, No Substitute.



KCDA No.	Description	Finish	Height	Mfg. No.	U/M
<b>71213</b>	2 Shelves	Harvest	29-7/8"	1891	Ea
<b>71194</b>	2 Shelves	Mahogany	29-7/8"	1891	Ea
<b>71214</b>	3 Shelves	Harvest	36-1/8"	H1892.C	Ea
<b>71197</b>	3 Shelves	Mahogany	36-1/8"	1892	Ea
<b>71165</b>	4 Shelves	Harvest	48-3/4"	1894	Ea
<b>71201</b>	4 Shelves	Mahogany	48-3/4"	1894	Ea
<b>71211</b>	5 Shelves	Harvest	60-1/8"	1895	Ea
<b>71205</b>	5 Shelves	Mahogany	60-1/8"	1895	Ea
<b>71212</b>	6 Shelves	Harvest	72-5/8"	1896	Ea
<b>71210</b>	6 Shelves	Mahogany	72-5/8"	1896	Ea

**Performance Bookcase**

3 shelf bookcase, honey laminate with 3mm PVC edge. Performance, No Substitute.



KCDA No.	Mfg. No.	U/M
<b>71008</b>	PL155	Ea

**Wood Veneer Bookcases**

Made of high density 3/4" particle board, adjustable shelves, cam-lock assembly with concealed hardware, all bookcases are 36" wide x 12" deep with inserted shelves. Qualifying Standard: Norson.



KCDA No.	Shelf Openings	Height	Finish	U/M
<b>71011</b>	2	30"	Cherry	Ea
<b>71020</b>	2	30"	California Oak	Ea
<b>71014</b>	3	48"	Cherry	Ea
<b>71022</b>	3	48"	California Oak	Ea
<b>71013</b>	3	48"	Walnut	Ea
<b>71015</b>	4	60"	Cherry	Ea
<b>71024</b>	4	60"	California Oak	Ea
<b>71016</b>	5	72"	Cherry	Ea
<b>71026</b>	5	72"	California Oak	Ea
<b>71017</b>	6	84"	Cherry	Ea
<b>71028</b>	6	84"	California Oak	Ea
<b>71018</b>	6	84"	Walnut	Ea

**CABINETS / DISPLAY**

**Ghent Heritage Display Case**

This case measures 70" high x 48" wide x 18" deep with a 10" base. The frame is carmel oak with a white laminate back. Sliding tempered glass doors, built-in locks and levelers are standard. Ghent, No Substitute.

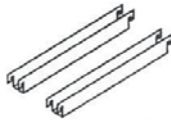


KCDA No.	Mfg. No.	U/M
<b>73210</b>	891K	Ea

**CABINETS / FILE CABINETS / ACCESSORIES**

**Hon File Cabinet Hanging Rails**

Double rail hanging file racks, for front to back filing in 36" and 42" laterals. One package converts one drawer, racks span between 15-1/4" rails. Gray. Hon, No Substitute.

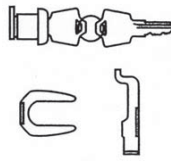


• KCDA carries other hanging file frames see KCDA Nos. 12990 and 12993.

KCDA No.	Mfg. No.	U/M
<b>71310</b>	919492	Pkg

**Hon File Cabinet Lock**

Chrome core removable lock kit for vertical files, (Field Installable). Includes: 1 lock with core, 2-keys, attaching linkage, adapters for use with most vertical files produced prior to 2/3/97 and instructions. Hon, No Substitute.



KCDA No.	Mfg. No.	U/M
<b>71811</b>	F24	Kit

**Hon File Cabinet Master Key**

Will open all HON products with HON "One Key" interchangeable core removable locks. Will open F23B, F23C and F-24 locks numbered 101E-225E. Will open old HON style MB series locks. Hon, No Substitute.



• All orders for this Master Key must have a signed agreement. Please contact Kathy Elliott 253-395-5402 ext. 149 for the form.

KCDA No.	Mfg. No.	U/M
<b>71812</b>	F22	Ea

**Virco File Cabinet Lock Core**

Key-Alike program, by choosing Virco's key-alike option, you can purchase lock cores for multiple vertical files that open with a single key. Virco. No Substitute.



• For use with Virco file cabinets only.

KCDA No.	Mfg. No.	U/M
<b>74309</b>	53FKEY	Ea

**Performance File Cabinet Caster Set**

Converts the Performance file pedestal cabinet to a mobile pedestal file cabinet, raises the file cabinet to 27-7/8" in height. Performance, No Substitute.

• File cabinet caster set for KCDA No. 71000

KCDA No.	Mfg. No.	U/M
<b>71006</b>	Casters	Set

**CABINETS / FILE CABINETS / FIRE RESISTANT**

**File Cabinets**

4 drawer, comes with high sides for hanging files. These full-size file cabinets carry Underwriters' Laboratories 1-hour fire rating with impact. A UL-listed high security key lock is standard. Qualifying Standard: FireKing.



- 71760 = 52-3/4" H x 17-3/4" W x 31-9/16" D.
- 71761 = 52-3/4" H x 20-13/16" W x 31-9/16" D.
- 71762 = 52-3/4" H x 37-15/32" W x 22-1/8" D.
- 71763 = 52-3/4" H x 44-15/32" W x 22-1/8" D.

KCDA No.	Description	Color	U/M
<b>71760</b>	Vertical, Letter	Sand	Ea
<b>71761</b>	Vertical, Legal	Sand	Ea
<b>71762</b>	Lateral	Sand	Ea
<b>71763</b>	Lateral	Sand	Ea

**CABINETS / FILE CABINETS / LATERAL**

**Hon 680L Series Lateral File Cabinets**

For side to side filing with lock, equipped to file side to side. Hon, No Substitute.



- 2 Drawer = 28-3/8" H x 36" W x 19-1/4" D.
- 3 Drawer = 40-7/8" H x 36" W x 19-1/4" D.
- 4 Drawer = 53-1/4" H x 36" W x 19-1/4" D.

KCDA No.	Drawers	Color	Mfg. No.	U/M
<b>71248</b>	2	Black	682LP	Ea
<b>71250</b>	2	Charcoal	682LS	Ea
<b>71249</b>	2	Grey, Light	682LQ	Ea
<b>71243</b>	2	Putty	682LL	Ea
<b>71257</b>	3	Black	683LP	Ea
<b>71259</b>	3	Charcoal	683LS	Ea
<b>71258</b>	3	Grey, Light	683LQ	Ea
<b>71253</b>	3	Putty	683LL	Ea
<b>71268</b>	4	Black	684LP	Ea
<b>71269</b>	4	Charcoal	684LS	Ea
<b>71262</b>	4	Grey, Light	684LQ	Ea
<b>71263</b>	4	Putty	684LL	Ea

**Hon Lateral File Cabinets**

5 drawer locking cabinet, top drawer is a roll out posting shelf. 67" high. Hon, No Substitute.



KCDA No.	Width	Color	Mfg. No.	U/M
<b>71320</b>	36"	Grey, Light	685LQ	Ea
<b>71316</b>	36"	Putty	685LL	Ea
<b>71327</b>	42"	Black	695LP	Ea
<b>71329</b>	42"	Charcoal	695LS	Ea
<b>71328</b>	42"	Grey, Light	695LQ	Ea
<b>71324</b>	42"	Putty	695LL	Ea

**\* Don't See What You Need Here?**  
We can source it for you.

Contact KCDA customer service with the details at [customerservice@kcda.org](mailto:customerservice@kcda.org) or 800-422-5019.

**Hon 690 Series Lateral File Cabinets**

Side to side file cabinet with lock. Hon, No Substitute.

- 2 Drawer = 28-3/8" H x 42" W x 19-1/4" D.
- 3 Drawer = 40-7/8" H x 42" W x 19-1/4" D.
- 4 Drawer = 53-1/4" H x 42" W x 19-1/4" D.



KCDA No.	Drawers	Color	Mfg. No.	U/M
71288	2	Black	692LP	Ea
71290	2	Charcoal	692LS	Ea
71289	2	Grey, Light	692LQ	Ea
71283	2	Putty	692LL	Ea
71298	3	Black	693LP	Ea
71299	3	Grey, Light	693LQ	Ea
71293	3	Putty	693LL	Ea
71308	4	Black	694LP	Ea
71314	4	Charcoal	694LS	Ea
71309	4	Grey, Light	694LQ	Ea
71303	4	Putty	694LL	Ea



**Mobile File Cabinets**

These mobile pedestal file cabinets have a sliding arm ball bearing suspension that ensures smooth drawer action. Included with these cabinets are standard casters and cam locks. A pencil tray is included in cabinets with a top box drawer. The file drawers can accommodate side to side or front to back filing. The cabinets measure 15"wx23"d with varying heights. Qualifying Standard: Global.

KCDA No.	Description	Color	Height	U/M
71330	Box/File	Black	22"	Ea
71331	Box/File	Light Gray	22"	Ea
71332	Box/Box/File	Black	28"	Ea
71333	Box/Box/File	Light Gray	28"	Ea
71334	File/File	Black	28"	Ea
71335	File/File	Light Gray	28"	Ea

**CABINETS / FILE CABINETS / MOBILE/PEDESTAL**

**Hon Pedestal File Cabinet**

This file cabinet is made to use under desk shell KCDA No. 73255, credenza and return shells. It is a box/box/file, floor standing pedestal measuring 15-3/8" wide x 22-3/4" deep x 28" high. The top box drawer does not lock and the cabinet file includes hang rails, the surface is harvest laminate. Hon, No Substitute.

- Fits under KCDA No. 73255



KCDA No.	Mfg. No.	U/M
73256	H10502.C	Ea

**Mobile File Cabinets**

27-1/2" high x 20" deep x 15" wide, with lock. Standard pulls, locks and casters. Qualifying Standard: Meridian/Herman Miller. Herman Miller offers a wide variety of colors, please call if more information is needed.



KCDA No.	Description	Color	U/M
75198	Box/Box/File	Light Grey	Ea
75197	File/File	Light Grey	Ea
75199	File/File	Tan	Ea

**Mobile File Cabinets**

These mobile file cabinets measure 19" deep x 15" wide x 28" high, they include standard cam locks with removable cores for keying alike and casters. Box top drawer includes one pencil tray and file drawer has high sides to accommodate front to back hanging file folders. All drawers feature ball bearing suspension. Qualifying Standard: Global.



KCDA No.	Description	Color	U/M
71340	Box/File	Black	Ea
71341	Box/File	Light Gray	Ea
71342	Box/Box/File	Black	Ea
71343	Box/Box/File	Light Gray	Ea
71344	File/File	Black	Ea
71345	File/File	Light Gray	Ea

**Performance Pedestal File Cabinet**

This black metal pedestal file cabinet includes 2 box drawers and 1 file drawer. A single lock is included to lock for all 3 drawers. This cabinet measures 15" wide x 22" deep x 27-1/2" high. Performance, No Substitute.

- Caster set available see KCDA No. 71006.



KCDA No.	Mfg. No.	U/M
71000	PMP-BBF	Ea

**CABINETS / FILE CABINETS / VERTICAL**

**Hon 210 Series Vertical File Cabinets - Legal**

These locking file cabinets have steel thumb latch full suspension drawers with ten nylon rollers and include high drawer sides that eliminates the need for hangrails. Hon, No Substitute.

Legal Outside Dimensions:

- 2-Drawer = 29" H x 18-1/4" W x 28-1/2" D.
- 3-Drawer = 40" H x 18-1/4" W x 28-1/2" D.
- 4-Drawer = 52" H x 18-1/4" W x 28-1/2" D.
- 5-Drawer = 60" H x 18-1/4" W x 28-1/2" D.



KCDA No.	Drawers	Color	Mfg. No.	U/M
71465	2	Black	212CPP	Ea
71469	2	Charcoal	212CPS	Ea
71414	2	Grey, Light	212CPQ	Ea
71486	2	Putty	212CPL	Ea
71680	4	Black	214CPP	Ea
71658	4	Charcoal	214CPS	Ea
71618	4	Grey, Light	214CPQ	Ea
71695	4	Putty	214CPL	Ea
71227	5	Black	215CPP	Ea
71219	5	Grey, Light	215CPQ	Ea
71246	5	Tan	215CPV	Ea
71223	5	Taupe	215CPE	Ea



Please visit our website [www.kcda.org](http://www.kcda.org) for current prices on all products listed in the KCDA Reference Guide.

**Hon 210 Series Vertical File Cabinets - Letter**

These locking file cabinets have steel thumb latch full suspension drawers with ten nylon rollers and include high drawer sides that eliminates the need for hangrails. Hon, No Substitute.

Letter Outside Dimensions:

- 2-Drawer = 29" H x 15" W x 28-1/2" D.
- 4-Drawer = 52" H x 15" W x 28-1/2" D.
- 5-Drawer = 60" H x 15" W x 28-1/2" D.



KCDA No.	Drawers	Color	Mfg. No.	U/M
71455	2	Black	212PP	Ea
71467	2	Charcoal	212PS	Ea
71404	2	Grey, Light	212PQ	Ea
71482	2	Putty	212PL	Ea
71665	4	Black	214PP	Ea
71656	4	Charcoal	214PS	Ea
71606	4	Grey, Light	214PQ	Ea
71691	4	Putty	214PL	Ea
71225	5	Black	215PP	Ea
71229	5	Charcoal	215PS	Ea
71237	5	Putty	215PL	Ea

**Vertical File Cabinets - Legal**

Non-locking, progressive triple tied cradle suspension with nylon rollers. Fully adjustable and removable follower block is standard. High drawer sides eliminate additional need for costly hanging file frames. Drawer pulls, thumb latch, and label holder are color coordinated. Qualifying Standard: Global.

- 2 Drawer = 29" H x 18" W x 25" D.
- 4 Drawer = 52" H x 18" W x 25" D.



KCDA No.	Color	Drawers	U/M
71462	Black	2	Ea
71459	Light Grey	2	Ea
71461	Putty	2	Ea
71473	Black	4	Ea
71471	Light Grey	4	Ea
71472	Putty	4	Ea

**Vertical File Cabinets - Letter**

Non-locking, progressive triple tied cradle suspension with nylon rollers. Drawer pulls, thumb latch, and label holder are color coordinated. Fully adjustable and removable follower block is standard. High drawer sides eliminate additional need for costly hanging file frames. Qualifying Standard: Global.

- 2 Drawer = 29" H x 15" W x 25" D.
- 4 Drawer = 52" H x 15" W x 25" D.



KCDA No.	Color	Drawers	U/M
71458	Black	2	Ea
71456	Light Grey	2	Ea
71457	Putty	2	Ea
71470	Black	4	Ea
71463	Light Grey	4	Ea
71348	Putty, Desert	4	Ea

**Vertical File Cabinets - Legal**

2 drawer. These file cabinets measure 18" wide x 26-9/16" deep x 29" high. Non-locking, progressive triple tied cradle suspension with nylon rollers. Drawer pulls, thumb latch, and label holder are color coordinated. Fully adjustable and removable follower block is standard. High drawer sides eliminate additional need for costly hanging file frames. Qualifying Standard: Global.



KCDA No.	Color	U/M
71479	Black	Ea
71477	Grey, Light	Ea
71478	Putty	Ea

**Vertical File Cabinets - Letter**

Non-locking, progressive triple tied cradle suspension with nylon rollers. These models have an aluminum label holder the drawer handles are the same color as the cabinet. Qualifying Standard: Global.

- 2 Drawer = 29" H x 15" W x 26-9/16" D.
- 5 Drawer = 64-1/4" H x 15" W x 26-9/16" D.



KCDA No.	Color	Drawers	U/M
71476	Black	2	Ea
71475	Putty	2	Ea
71475	Grey, Light	2	Ea
71489	Black	5	Ea
71487	Grey, Light	5	Ea
71488	Putty	5	Ea

**Virco 54 Series Vertical File Cabinet**

This file cabinet is equipped with an integral lock that controls all drawers, an anti-tip feature to allow only one drawer at a time to extend, with drawer pulls and label holders. The drawers have steel ball-bearing slides and are full extension. This 4 drawer cabinet measures 15" wide x 26-1/2" deep x 52-1/8" high. Virco, No Substitute.



KCDA No.	Color	Mfg. No.	U/M
74324	Putty	54VF154D	Ea

**CABINETS / STORAGE**

**Mobile Drawer Storage Cabinet**

Dixie oak finish, measures 48" wide x 36" high x 28" deep, 5 deep drawers. Qualifying Standard: Ironwood.



KCDA No.	U/M
70426	Ea

**Mobile Drawer Storage Cabinets**

Dixie oak finish, 48" wide x 36" high x 22" deep. Qualifying Standard: Ironwood.



KCDA No.	Description	U/M
70427	3, 10" Drawers	Ea
70428	4, 7-1/2" Drawers	Ea
70429	5, 6" Drawers	Ea

**Virco 2325 Mobile Storage Drawers**

These cabinets measure 48" wide x 28" deep x 36" high, includes 5 full-width paper drawers measuring 44" wide x 24-1/2" deep x 3-1/2" high. Virco, No Substitute.



KCDA No.	Finish	Mfg. No.	U/M
74316	Grey Nebula	2325	Ea
74315	Maple	2325	Ea
74317	Medium Oak	2325	Ea

**Mobile Tote Tray Storage Cabinets**

Dixie oak finish, Mobile unit with locking doors. Cabinet measures 48" wide x 22" deep. Does not include trays. Qualifying Standard: Ironwood.



For Tote Trays Order:

- 70445, holds 9 KCDA No. 99950, 12 KCDA No. 99952 or 15 KCDA No. 99945.
- 70444, holds 18 KCDA No. 99950, 24 KCDA No. 99952 or 30 KCDA No. 99945.
- 70446, holds 27 KCDA No. 99950, 36 KCDA No. 99952 or 45 KCDA No. 99945.

KCDA No.	Description	U/M
70445	29" High, 3 Shelves	Ea
70444	48" High, 6 Shelves	Ea
70446	66" High, 9 Shelves	Ea

**Mobile Wardrobe Storage Cabinets**

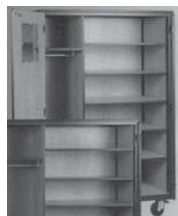
With locking doors, mirror, hanging rod, adjustable shelves, 2 file drawers, 48" wide x 22" deep, Dixie oak. Qualifying Standard: Ironwood.



KCDA No.	Description	U/M
70440	66" High, 2 Shelves	Ea
70441	72" High, 3 Shelves	Ea

**Mobile Wardrobe Storage Cabinets**

With locking doors, mirror, hanging rod, hat shelf, inserted adjustable shelves, 48" wide x 22" deep, Dixie Oak. Qualifying Standard: Ironwood.



KCDA No.	Height	U/M
70436	66"	Ea
70437	72"	Ea

**Mobile Wardrobe Storage Cabinets**

Dixie oak finish, with locking doors, hat shelf, 13 double faced hooks. Cabinet measures 48" wide x 22" deep. Qualifying Standard: Ironwood.



KCDA No.	Size	U/M
70438	66" H	Ea
70439	72" H	Ea



Please visit our website [www.kcda.org](http://www.kcda.org) for current prices on all products listed in the KCDA Reference Guide.

**Mobile Storage Cabinets with Doors**

Dixie oak finish, 4 inserted shelves, 48" wide x 22" deep, with locking doors. Qualifying Standard: Ironwood.



- KCDA No. 70431 has an additional fixed center shelf.

KCDA No.	Size	U/M
70430	66" H	Ea
70431	72" H	Ea

**Virco 2501 Mobile Storage Cabinets**

The versatile model has four adjustable shelves for organizing a wide variety of classroom material. Both doors lock for security. Cabinets measure 48" wide x 28" deep x 66" high. Virco, No Substitute.



KCDA No.	Finish	Mfg. No.	U/M
74319	Grey Nebula	2501	Ea
74318	Fusion Maple	2501	Ea
74320	Medium Oak	2325	Ea

**Virco 2513 Mobile Storage Cabinets**

These locking cabinets measure 48" wide x 28" deep x 66" high and have two hinged doors, two adjustable steel shelves, one 12" coat rod and one 8" wide x 11" high vanity mirror. It includes two paper drawers that are 44" wide x 24-1/2" deep x 3-1/2" high and two file drawers that are 13-3/4" wide x 19-3/4" deep x 11-1/2" high. Virco, No Substitute.



KCDA No.	Finish	Mfg. No.	U/M
74322	Grey Nebula	2513	Ea
74321	Fusion Maple	2513	Ea
74323	Medium Oak	2513	Ea

**Metal Storage Cabinets**

Tropic sand color, use these functional cabinets for all your office/storage needs, these models feature: Tru-Glide 3 point locking assembly, heavy gauge steel shelves adjustable on 2" centers, 4 adjustable shelves with satin chrome handles. Qualifying Standard: Sandusky Lee.



KCDA No.	Size	U/M
71168	72"x36"x18"	Ea
71169	78"x36"x18"	Ea

**Storage Cabinet, Locking**

Standard storage cabinet with 18" deep shelves is the perfect choice for office or industrial applications. Shelves adjust in 2" increments for flexibility. Three leaf hinges maintain door alignment. Reinforced doors lock at three points for maximum security. Chrome handle locks both doors. Raised base keeps cabinet contents from contacting floor moisture. 36" wide x 18" deep x 72" high. Qualifying Standard: Lakeshore.



KCDA No.	U/M
81626	Ea

**CHAIR CADDIES**

**KI Chair Caddies**

Beige color steel, 50 chair capacity, one-piece solid bed, 4" rubber-wheeled roller bearing casters, two swivel and two fixed with a fifth wheel in center. Adjustable center post to hold partial loads to eliminate load from shifting. The vertical caddy measures 106-1/2" long x 20-7/8" wide. Holds KI chairs only. KI, No Substitute.

- Fits chairs KCDA Nos. 73315, 73316, 73317 and 73318.

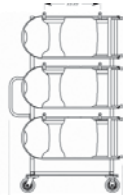


KCDA No.	Description	Mfg. No.	U/M
71845	Horizontal	KH.50	Ea
71840	Vertical	KV.50	Ea

**Mity-Lite Folding Chair Cart**

These carts hold Mity-Lite Mesh-One folding chairs. Mity-Lite, No Substitute.

- Use with chair KCDA No. 70130.



KCDA No.	Holds	Mfg. No.	U/M
70131	30 Mesh-One Chairs	CRTTREE2	Ea
70132	60 Mesh-One Chairs	CRTTREE1	Ea

**NPS Chair Dolly**

For National Public Seating chairs only. This caddy holds 84 steel or plastic folding chairs, measures 66" wide x 70" high x 33-1/4" deep and fits through an 80" doorway. Dark brown color with heavy duty 4" x 1-1/4" casters. It comes easy to assemble with only 12 bolts. National Public Seating, No Substitute.

- Use with chair KCDA No. 71353.

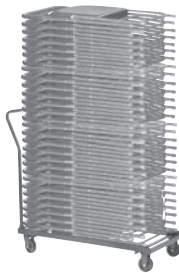


KCDA No.	Mfg. No.	U/M
71304	84	Ea

**NPS Chair Dolly**

For National Public Seating chairs only. This caddy stacks up to 36 of the 800 model plastic folding chairs. Includes a handle, is made of "L" shaped angle steel and has 2" casters with two swivel front wheels for easy maneuverability. This chair caddy measures 19" wide, has a 39" bed, is 31" high and fits through a standard height door. National Public Seating, No Substitute.

- Use with chairs KCDA Nos. 71300 and 71301.



KCDA No.	Mfg. No.	U/M
71305	DU800/700	Ea

**\* Don't See What You Need Here?**  
We can source it for you.

Contact KCDA customer service with the details at [customerservice@kcda.org](mailto:customerservice@kcda.org) or 800-422-5019.

**Virco Chair Caddies**

Holds Virco chairs only. Angle iron welded construction with locking casters, black. Virco, No Substitute.



**Use with Virco Folding Chairs:**

- 162 Series - KCDA Nos. 72051, 72053, 72056, 72057 & 72058.
- 167 Series - KCDA No. 72055.
- 168 Series - KCDA Nos. 72108 & 72109.
- 188 Series - KCDA Nos. 72203, 72004 & 72205



KCDA No.	Description	Holds	Mfg. No.	U/M
71832	Vertical Position	32 Chairs	HCT6	Ea
71833	Vertical Position	42 Chairs	HCT8	Ea
71835	2-Tier Position	84 Chairs	HCT6072	Ea

**CHAIRS / ARM KITS**

**Hon Chair Arm Kit**

T-arms, adjustable height. Hon, No Substitute.

- Fits Hon Comfortask chairs, KCDA Nos. 70002, 71909, 71958, and 72206.



KCDA No.	Mfg. No.	U/M
71943	5995P	Ea

**Hon Chair Arm Kit**

T-arms, fixed position. Hon, No Substitute.

- Fits Hon Comfortask chairs, KCDA No. 71918, and 71934.



KCDA No.	Mfg. No.	U/M
71939	5991P	Ea

**Horizon Chair Arm Kit**

T style adjustable height and width, Black non-upholstered. Horizon, No Substitute.

- Fits Horizon chairs HZ4000J Series, KCDA Nos. 71819, 71820, 71821 and 71822.



KCDA No.	Mfg. No.	U/M
71844	PU250	Ea

**CHAIRS / FOLDING**

**KI 101 Series Folding Chairs**

Engineered for long life, features two welded cross braces (one front, one rear) and seam-welded tubular-steel frames. 3" frame strengtheners and a wallsaver design. Tough steel seat and back is easy to clean. KI, No Substitute.



- Caddies available see KCDA Nos. 71840 and 71845.

KCDA No.	Color	Mfg. No.	U/M
73316	Beige	101	Ea
73315	Black	101	Ea

**KI 701 Series Folding Chairs**

Constructed of seam-welded tubular steel with a heavy-duty steel backrest and seat. KI's exclusive welded steel seat bridge, 3" frame strengtheners and three welded crossbars provide unmatched performance. Wallsaver design prevents marring. KI, No Substitute.



- Caddies available see KCDA Nos. 71840 and 71845.

KCDA No.	Color	Mfg. No.	U/M
73318	Black	701	Ea
73317	Grey	701	Ea

**Mity-Lite Mesh One Folding Chair**

Durable, lightweight, and comfortable. Weighing 20% less than upholstered folding chairs, easy to handle, stain resistant, and nets securely when stored. Made in the USA, ergonomic design utilizes a breathable elastomeric mesh that until now was used only on high-end business chairs. Conforms to each individual's unique shape, minimizes pressure points, maximizes airflow and delivers unsurpassed comfort. Mity-Lite, No Substitute.

• For chair cart see KCDA Nos. 70131 & 70132.



KCDA No.	Color	Mfg. No.	U/M
70130	Black	IFMBKSBLKOO	Ea

**NPS Folding Chair**

Steel, gray, 15-3/4" wide x 16" deep x 16-3/4" high. Two U-shaped riveted cross braces, 18 gauge steel tubing. Full size double contoured back and waterfall seat, the rear leg caps are V-shaped for added stability. National Public Seating, No Substitute.

- Use chair dolly KCDA No. 71304.
- Must be ordered in a carton of 4.



KCDA No.	Mfg. No.	U/M
71353	202	Ea

**NPS Folding Chairs**

18 gauge steel, with 7/8" tubular frame and 5/8" cross supports. The seat and back are made of polypropylene plastic with special edging. The seat has "U" shaped cross braces, attached to the main frame; double hinges; and "V" shaped stability plugs. Leg glides are replaceable non-marring polyethylene. These chairs are stackable up to 80" high, or 36 chairs. Overall chair dimensions are 29" high x 18" wide x 20" deep. National Public Seating, No Substitute.

• Use chair dolly KCDA No. 71305.



KCDA No.	Color	Mfg. No.	U/M
71300	Black/Black	810	Ea
71301	Blue/Grey	805	Ea

**Virco 162 Folding Chairs**

Each chair has a sturdy 7/8" steel frame that is reinforced with multiple U-shaped leg braces for extra strength and are heavy-gauge riveted to the frame. Virco, No Substitute.

- 29-1/2" Overall Height.
- 16-3/4" Seat Height.
- 17-3/4" Front Leg Span.
- 18-5/8" Side Leg Span.
- Use Virco chair caddies, KCDA Nos. 71832, 71833 and 71835.



KCDA No.	Color	Mfg. No.	U/M
72058	Black, Char	162	Ea
72053	Bronze, Eldorado	162	Ea
72057	Bronze, Gold	162	Ea
73051	Mocha	162	Ea
72056	Silver Mist	162	Ea

**Virco 167 Folding Chair**

Each chair has a sturdy 7/8" steel frame that is reinforced with multiple U-shaped leg braces for extra strength and are heavy-gauge riveted to the frame. This model has double U-shaped back leg braces. Virco, No Substitute.

- 29-1/2" Overall Height.
- 16-3/4" Seat Height.
- 17-3/4" Front Leg Span.
- 18-5/8" Side Leg Span.
- Use Virco chair caddies, KCDA Nos. 71832, 71833 and 71835.



KCDA No.	Color	Mfg. No.	U/M
72055	Bronze, Golden	167	Ea

**Virco 168 Folding Chairs**

This chair features vinyl upholstered seat and back for added comfort. Each chair has a sturdy 7/8" steel frame that is reinforced with multiple U-shaped leg braces for extra strength. U-shaped leg braces are heavy-gauge riveted to the frame. Virco, No Substitute.

- 29-1/2" Overall Height.
- 16-3/4" Seat Height.
- 17-3/4" Front Leg Span.
- 18-5/8" Side Leg Span.
- Use Virco chair caddies, KCDA Nos. 71832, 71833 and 71835.



KCDA No.	Color	Frame	Mfg. No.	U/M
72108	Mocha Vinyl	Brown	168	Ea
73317	Silver Mist Vinyl	Silver	168	Ea

**Virco 188 Folding Chairs**

This chair features fabric upholstered seat and back for added comfort. Each chair has a sturdy 7/8" steel frame that is reinforced with multiple U-shaped leg braces for extra strength. U-shaped leg braces are heavy-gauge riveted to the frame. Virco, No Substitute.

- 29-1/2" Overall Height.
- 16-3/4" Seat Height.
- 17-3/4" Front Leg Span.
- 18-5/8" Side Leg Span.
- Use Virco chair caddies, KCDA Nos. 71832, 71833 and 71835.



KCDA No.	Fabric	Frame	Mfg. No.	U/M
72203	Sedona Ruby	Black	188	Ea
72204	Sedona Sailor	Silver	188	Ea
72205	Sedona Loden	Black	188	Ea

**CHAIRS / MOBILE**

**Virco Mobile Chairs**

Four chromed steel legs with hooded casters and 2" dual wheels, plastic shell with three ventilation slots padded seat and back. Seat height 18", Non-adjustable. Virco, No Substitute.



KCDA No.	Color	Mfg. No.	U/M
72328	Blue, Navy	9050P	Ea
72330	Graphite	9050P	Ea
72331	Green, Forest	9050P	Ea
72329	Wine	9050P	Ea

Furniture



Please visit our website [www.kcda.org](http://www.kcda.org) for current prices on all products listed in the KCDA Reference Guide.

**CHAIRS / PNEUMATIC**

**First Office Fuze Armless Task Chair**

Armless task chair with upholstered seat and back. Pneumatic synchronous control. Black urethane base with partial hood black casters. Seat measures 20" wide x 25" deep with a seat height of 38"-42". Momentum knock teak fabric. First Office, No Substitute.



KCDA No.	Mfg. No.	U/M
<b>72173</b>	F71016.A3S.TV.A3VSA	Ea

**Highmark Sprint Plush Task Chair**

With ergonomic grace and efficiency this chair features an internal ratchet back height adjustment, seat and back molded foam, a comprehensive menu of task and tilt controls, two stool heights, and multiple arm options. Fiberglass reinforced nylon base. Orchid bangle momentum fabric. Mechanism rated to 300 Lbs. Highmark, No Substitute.



- 58% Recycled Fiber Content.

KCDA No.	Color	Mfg. No.	U/M
<b>71102</b>	Orchid	5507-D5-A27-GR.A	Ea

**Hon Comfortask 5901 Chairs**

These task chairs are engineered for consistent performance and high comfort, including molded back with integral lumbar support and is contoured to support the body with a waterfall seat edge for improved circulation. These are armless chairs with a black frame. Comfort controls include: pneumatic seat height adjustment, back height adjustment, seat depth adjustment and 360 degree swivel. Hon, No Substitute.



- To add arms use KCDA Nos. 71939 and 71943.

KCDA No.	Fabric	Mfg. No.	U/M
<b>71909</b>	Blue, Confetti	H5901.H.AB90.T	Ea
<b>72206</b>	Burgundy	H5901.H.AB62.T	Ea
<b>70002</b>	Fog	H5901.H.NR19.T	Ea
<b>71958</b>	Grey	H5901.H.AB.12.T	Ea

**Hon Comfortask 5902 Chairs**

These task chairs are engineered for consistent performance and high comfort, including molded back with integral lumbar support and is contoured to support the body with a waterfall seat edge for improved circulation. These are armless chairs with a black frame. Comfort controls include: pneumatic seat height adjustment, back height adjustment, 360 degree swivel, tilt, tilt tension and tilt lock. Hon, No Substitute.



- To add arms use KCDA Nos. 71939 and 71943.

KCDA No.	Fabric/Frame	Mfg. No.	U/M
<b>71230</b>	Inertia Onyx	H5902.H.MR10.T	Ea
<b>71231</b>	Confetti Burgundy	H5902.H.AB62.T	Ea
<b>71900</b>	Confetti Blue	H5902.H.AB90.T	Ea
<b>71918</b>	Fog/Black	H.5902.H.NR19.T	Ea

**Hon Comfortask 5903 Chairs**

These task chairs are engineered for consistent performance and high comfort, including molded back with integral lumbar support and is contoured to support the body with a waterfall seat edge for improved circulation. These are armless chairs with a black frame. Comfort controls include: pneumatic seat height adjustment, back height adjustment, 360 degree swivel and multi-task control. Hon, No Substitute.



- To add arms use KCDA Nos. 71939 and 71943.

KCDA No.	Fabric/Frame	Mfg. No.	U/M
<b>71895</b>	Confetti Blue	H5903.H.AB90.T	Ea
<b>71954</b>	Crimson	5903.AI.62.T	Ea
<b>71934</b>	Onyx	5903.AI.62.T	Ea

**Hon Everyday Task Chairs**

These chairs are engineered with multi-layer foam padding which provides all-day comfort and support. Comfort controls include: pneumatic seat height adjustment, back height adjustment and 360 degree swivel. These task chairs are armless. The seat measures 20-1/2" wide x 18-1/4" deep with a 16" back. 5 star base. Hon, No Substitute.



KCDA No.	Frame	Fabric	Mfg. No.	U/M
<b>71826</b>	Oatmeal	Black	H7901.H.BE16.T	Ea

**Hon Executive 2901 Chairs**

Built in lumbar support, curved wood arms and wood laminate base caps. Comfort controls include: pneumatic seat height adjustment, 360 degree swivel, tilt, tilt tension and tilt lock. 29-1/4" deep x 26-1/4" wide x 43-1/2" high. Hon, No Substitute.



KCDA No.	Fabric/Frame	Mfg. No.	U/M
<b>70913</b>	Black	H2901.C.AB 10	Ea
<b>70914</b>	Burgundy	H2901.C.AB 62	Ea
<b>70915</b>	Blue	H2901.C.AB 90	Ea

**Hon Executive 7803 Chairs**

This chair gives great performance with its high back with concave and convex curves. Curved substrate provides unusually good support for legs and lower body. The wave-formed seat cushion is molded foam that holds its shape. fabric seat and back, black frame. Comfort controls include: pneumatic seat height adjustment, back height adjustment, 360 degree swivel, tilt, tilt tension, tilt lock, posture mechanism/lock and height/width-adjustable arms. Hon, No Substitute.



KCDA No.	Fabric	Mfg. No.	U/M
<b>70916</b>	Confetti Black	H7803.H.AB10.T	Ea
<b>70918</b>	Confetti Blue	H7803.H.AB90.T	Ea
<b>70917</b>	Confetti Burgundy	H7803.H.AB62.T	Ea
<b>70968</b>	Oatmeal	H7803.H.BE16.T	Ea

**\* Don't See What You Need Here?**  
*We can source it for you.*

Contact KCDA customer service with the details at [customerservice@kcda.org](mailto:customerservice@kcda.org) or 800-422-5019.



**Hon Executive Pneumatic Chairs**

High back, loop arms. Swivel, tilt, tilt tension, tilt lock. Grade 3 fabric. Hon, No Substitute.

KCDA No.	Color	Mfg. No.	U/M
<b>70920</b>	Confetti Black	H2071.H.AB10.T	Ea
<b>70919</b>	Confetti Blue	H2071.H.AB90.T	Ea
<b>70921</b>	Confetti Burgundy	H2071.H.AB62.T	Ea



**Hon Managerial Pneumatic Chairs**

This pneumatic chair has a mid back design with loop arms. The chairs feature swivel, tilt, tilt tension, tilt lock and hard casters. The measurements are 36-1/4" deep x 27-1/2" wide x 43-5/8" high. Hon, No Substitute.

KCDA No.	Fabric	Mfg. No.	U/M
<b>70924</b>	Confetti Black	H2072	Ea
<b>70922</b>	Confetti Blue	H2072	Ea
<b>70923</b>	Confetti Burgundy	H2072	Ea



**Horizon Millennium Chairs**

Armless, adjustable seat height from 17" to 22", seat width 18-1/2" depth 18". Back height 15-1/2"x17" width. Adjustable Seat pneumatic and backrest adjustment is manual. Seat depth adjustable manual. Black 5 star pedestal base. Horizon, No Substitute.

KCDA No.	Color	Mfg. No.	U/M
<b>71821</b>	Black	HZ4000J	Ea
<b>71819</b>	Blue	HZ4000J	Ea
<b>71820</b>	Burgundy	HZ4000J	Ea
<b>71822</b>	Grey	HZ4000J	Ea



**INSYNC Highback Task Chair**

This chair synchronizes with each user, automatically adjusting to the weight and size of each person using body balance technology. Gone are complicated paddles and knobs, a simple dual-function lever adjusts seat-height and multi-positional lockout. The fabric is Orchid bangle momentum and the base is polished aluminum. The arms and lumbar support are adjustable. Highmark, No Substitute.

• *Made of 21% recycled post-industrial material and is 98% recyclable.*

KCDA No.	Mfg. No.	U/M
<b>71101</b>	310-R1-A2-L4-B12-GR.A	Ea



**Pneumatic Lift Chairs**

Swivel/rocking tilt, black frame with loop arms. The seat measures 20" wide x 19" deep and the back measures 19" wide x 22" high. Qualifying Standard: Office Master.

KCDA No.	Fabric	U/M
<b>71946</b>	Blue	Ea
<b>71947</b>	Burgundy	Ea
<b>71945</b>	Charcoal	Ea



**Office Star Basic Task Chair**

This basic task chair has pneumatic one touch control for back and seat adjustments. The casters have a heavy duty nylon base with dual carpet wheels. The overall size is 38" high x 19.5" wide x 21.5" deep. Office Star, No Substitute.

KCDA No.	Color	Mfg. No.	U/M
<b>71937</b>	Ink Blue	SC117	Ea



**Performance Pneumatic Chair**

This ergonomic chair features a black fabric seat with a black mesh high back. The many function features of this chair are adjustable arms, pneumatic height adjustment and independent seat/back angle with seat slider. The overall size is 25-1/2" wide x 26" deep x 40-1/2" high and the seat measures 21" wide x 19-1/2" deep, the seat height adjusts from 18-1/2" to 22". Performance, No Substitute.

KCDA No.	Mfg. No.	U/M
<b>71009</b>	7704ST	Ea



**Performance Pneumatic Chair**

This ergonomic chair features pneumatic height adjustment, adjustable seat height with 360 degree seat swivel. Tilt tension control with independent seat/back angle and with front to back seat slider. The arms are adjustable in height and width. The overall size for this chair is 27" wide x 24" deep x 41- 44-1/2" high. The Seat measures at 21" wide x 20-1/2" deep and the height adjusts from 17-1/2" to 22" high. Performance, No Substitute.

KCDA No.	Mfg. No.	U/M
<b>71012</b>	84565/311AK	Ea



**Performance Task Chair**

This basic task chair is armless, has pneumatic adjustable height, 5 star base with casters. The seat measures 18-1/2" wide x 18-1/2" deep. Performance, No Substitute.

KCDA No.	Mfg. No.	U/M
<b>71019</b>	3501	Ea



**Pneumatic Basic Task Chairs**

Armless, spider base. Horizontal back rest depth. The back measures 19.5" high x 18" wide. Qualifying Standard: Sit-on-it.

KCDA No.	Fabric/Frame	U/M
<b>72099</b>	Chess/Midnight	Ea
<b>72100</b>	Chess/Port	Ea
<b>72115</b>	Garnet	Ea
<b>72114</b>	Steel Gray/Sugar Kiss	Ea



Please visit our website [www.kcda.org](http://www.kcda.org) for current prices on all products listed in the KCDA Reference Guide.

**Intensive Task Chairs**

Pistol grip arms, spider base. Pneumatic seat height adjustment. Swivels 360 degrees. Back height adjusts up to 19.5" with manual knob. Articulating seat and back. Infinite back angle adjustment. Adjusts to 5 degrees forward seat angle. Qualifying Standard: Sit-on-it.



KCDA No.	Color	U/M
<b>72106</b>	Chess Midnight	Ea
<b>72107</b>	Chess Port	Ea
<b>72111</b>	Steel Gray/Sugar Kiss	Ea

**Virco 4300 Series Chairs**

Pneumatically adjustable seat-height; 5 point caster base. For computer labs, libraries or other learning environments. Virco, No Substitute.

Dimensions:

- *Seat Height: 17"-22"*
- *Seat Depth: 18-1/2"*
- *Back Height: 17"*
- *Overall Width: 19-3/4"*
- *Max. Overall Height: 39"*
- *Max. Overall Depth: 24"*



KCDA No.	Fabric/Frame	Mfg. No.	U/M
<b>71972</b>	Confetti Grey/Black	4300	Ea
<b>71971</b>	Confetti Navy/Black	4300	Ea

**Virco 4301 Series Chairs**

Seat and backrest recline in unison; upright-position tilt lock; pneumatically adjustable seat-height. For school offices, administrative areas and other venues. Virco, No Substitute.

Dimensions:

- *Seat Height: 17-3/4"-22-3/4"*
- *Seat Depth: 18-1/2"*
- *Back Height: 16-1/2"*
- *Overall Width: 19-3/4"*
- *Max. Overall Height: 38"*
- *Max. Overall Depth: 24"*



KCDA No.	Fabric/Frame	Mfg. No.	U/M
<b>71978</b>	Confetti Grey/Black	4301	Ea
<b>71973</b>	Confetti Navy/Black	4301	Ea
<b>71974</b>	Confetti Burgundy/Black	4301	Ea

**Hon Smartlink Pneumatic Task Chairs**

These chairs are constructed of impact resistance one piece easy to clean polypropylene shell with an easy access handle. Comes standard with a 5-leg 25.5" injection molded base and hard casters. Pneumatic gas cylinder provides a 5" seat height adjustment range (16"-21"). Hon, No Substitute.



KCDA No.	Color	Mfg. No.	U/M
<b>74607</b>	Onyx	HSSTK-18B.H.ON	Ea
<b>74608</b>	Mulberry	HSSTK-18B.H.MB	Ea



**Don't See What You Need Here?**  
*We can source it for you.*

Contact KCDA customer service with the details at [customerservice@kcda.org](mailto:customerservice@kcda.org) or 800-422-5019.

**Virco Mobile Chairs**

Hard plastic seat and backs, easy adjustable pneumatic seat height with gas cylinder, on casters, 5 star pedestal black base. Virco, No Substitute.



KCDA No.	Color	Mfg. No.	U/M
<b>71899</b>	Blue, Navy	3860GC	Ea
<b>71901</b>	Burgundy	3860GC	Ea
<b>71906</b>	Graphite	3860GC	Ea
<b>71903</b>	Red	3860GC	Ea
<b>71907</b>	Sandstone	3860GC	Ea

**Virco Mobile Task Chair**

Padded seat and back with adjustable seating from 15-1/8" to 20-1/4" high, the total chair height adjusts from 28-1/8" to 33-3/8". Virco, No Substitute.



KCDA No.	Fabric/Frame	Mfg. No.	U/M
<b>09063</b>	Navy/Black	9260PGC	Ea

**Virco Zuma Mobile Chair**

The compact seat and shorter adjustment range provides effective support for smaller students. A durable, comfortable and easily-cleaned seat makes this chair a good choice for high-traffic technology labs or classrooms with intensive keyboard use. Virco, No Substitute.



- *KCDA No. 72754, The seat adjusts from 14" to 17" high, the total chair height adjusts 26-1/4" to 29-1/4".*
- *KCDA No. 72766, The seat adjusts 16" to 20-1/2" high the total chair height adjusts 30" to 34-1/2".*

KCDA No.	Color/Frame	Mfg. No.	U/M
<b>72754</b>	Blueberry/Black	ZTASK15	Ea
<b>72766</b>	Wine/Black	ZTASK18	Ea

**CHAIRS / STOOLS / DRAFTING / LAB**

**Alumni Integrity Stool**

This stool is made with hard plastic and is ergonomically designed with lumbar and shoulder support. The frame has adjustable height from 21 to 28" and uses gas to lift. Premium urethane casters for use on both hard and soft surfaces. Alumni, No Substitute.



KCDA No.	Frame	Seat	Mfg. No.	U/M
<b>72133</b>	Black/Chrome	Navy	C-INT-GLR	Ea

**Hon Task Stools**

These pneumatic task stools are armless, have a flexible polypropylene one piece shell seat and back. The seat height adjusts from 22" to 32". The frame is made with durable steel and has a 5 star base with an adjustable foot ring that adjusts from 7.25" to 12.75" high. Hon, No Substitute.



KCDA No.	Color	Mfg. No.	U/M
<b>71784</b>	Lava	HSSST.18B.H.LA	Ea
<b>71785</b>	Regatta - Navy	HSSST.18B.H.RE	Ea

**AlphaBetter Stool**

This height adjustable stool is the perfect companion for our AlphaBetter desk. Everyone needs a rest on their way to the head of the class and these stools give students the perfect way to sit and sway. These tip-resistant stools adjust from 21" to 35-1/2" high and students can still use the footrest bar to keep burning energy. Built with a steel frame and sturdy 13" square seat, they are built to last. Safco, No Substitute.



• Use with AlphaBetter desk KCDA No. 71099.

KCDA No.	Mfg. No.	U/M
71100	1205BL	Ea

**Artco Bell Classroom Stools**

Polypropylene seat, 13-1/2" diameter, adjustable chrome legs. Artco Bell, No Substitute.



KCDA No.	Color	Mfg. No.	U/M
<i>Legs Adjust 19" to 27-1/2"</i>			
74091	Blue, Navy	0801-N5	Ea
73976	Burgundy	0801B5	Ea
73975	Chocolate	0801B5	Ea
73974	Green, Emerald	0801-95G	Ea
<i>Legs Adjust 23" to 32"</i>			
74092	Blue, Navy	0802N5	Ea
73978	Burgundy	0802B5	Ea
73977	Chocolate	0802-951	Ea
73973	Red, Ruby	0802-9E	Ea
74090	Teal	0802A5	Ea

**Filing Stool**

All steel with Masonite seat, reinforced with foot rest, gray finish, on casters. 14" high. Qualifying Standard: KI.



KCDA No.	U/M
73710	Ea

**High-Step Stools**

Spring loaded casters instantly retract base grip-ring locks to floor step off and stool moves in any direction. Qualifying Standard: Cramer.



KCDA No.	Color	U/M
73724	Black	Ea
73725	Beige	Ea

**Stationary Stools - Non-Adjustable**

Gray all steel with Masonite seat, welded foot ring. Qualifying Standard: KI.



KCDA No.	Size	U/M
73660	24"	Ea
73665	30"	Ea

**Virco Non Adjustable Stools**

Beige hard plastic seat with a chrome frame. Virco, No Substitute.



KCDA No.	Height	Mfg. No.	U/M
73707	18"	12118	Ea
73709	30"	12130	Ea
73708	24"	12124	Ea

**CHAIRS / STUDENT / NON-STACKING**

**BFF Reverse Cantilever Chair**

These chairs are lightweight and they hook on top of the desktop allowing easy access to the floor. The seat is textured on front and back and is made of injection-moulded polypropylene. The seat back features reinforcing, structural ribs and incorporates finger holes. Legs are composed of continuous tubular steel and are connected with steel crossbars beneath the seat. The finish is powder coated silver with smooth black plastic glides and plugs. MIEN Company, No Substitute.



KCDA No.	Color	Size	Mfg. No.	U/M
71104	Burgundy	18"	30103111	Ea
71103	Navy	18"	30106109	Ea

**Smartlink 4-Leg Chairs**

These chairs are constructed of impact resistance one piece easy to clean polypropylene shell with an easy access handle. The frame has a platinum texture and the legs are made of two 1.125" OD, 14 gauge steel tubes welded to two 12 gauge sheet metal L-brackets and includes nylon swivel glides. Full lifetime warranty, 4 per carton. Hon, No Substitute.



KCDA No.	Color	Height	Mfg. No.	U/M
74619	Mulberry	18"	HSS4L-18B.E.MB.P7A	4/Ctn
74609	Onyx	18"	HSS4L-18B.E.ON.P7A	4/Ctn

**Virco Non-Stacking Chairs**

Hard plastic chairs, sturdy unitized tubular steel frame with chrome finish and nylon base swivel glides. Virco 3300 Series, No Substitute.



KCDA No.	Color	Size	Mfg. No.	U/M
77967	Navy	14"	3314	Ea
77968	Sandstone	14"	3314	Ea
79816	Navy	16"	3316	Ea
79939	Black	18"	3318	Ea
79943	Navy	18"	3318	Ea
79944	Wine	18"	3318	Ea



Please visit our website [www.kcda.org](http://www.kcda.org) for current prices on all products listed in the KCDA Reference Guide.

**CHAIRS / STUDENT / STACKING**

**Artco Bell Stacking Chairs**

Hard plastic seat and back, frame is welded "x" below seat and forms hand grip behind back. Chrome frame, nylon glides. Artco Bell, No Substitute.



KCDA No.	Size	Color	Mfg. No.	U/M
73892	13-1/2"	Blue, Navy	X103N5	Ea
73893	13-1/2"	Burgundy	X103B5	Ea
73891	13-1/2"	Cranberry	X103C5	Ea
73894	13-1/2"	Grey	X103K5	Ea
73890	13-1/2"	Sand	X10335	Ea
73895	13-1/2"	Teal	X103A5	Ea
73898	15-1/2"	Blue, Navy	X105N5	Ea
73899	15-1/2"	Burgundy	X105BS	Ea
73897	15-1/2"	Cranberry	X105C5	Ea
73900	15-1/2"	Grey	X105K5	Ea
73896	15-1/2"	Sand	X10535	Ea
73901	15-1/2"	Teal	X105A5	Ea
73904	17-1/2"	Blue, Navy	X107N5	Ea
73905	17-1/2"	Burgundy	X107B5	Ea
73903	17-1/2"	Cranberry	X107C5	Ea
73906	17-1/2"	Grey	X107K5	Ea
73902	17-1/2"	Sand	X10735	Ea
73907	17-1/2"	Teal	X107A5	Ea

**Artco Bell Stacking Chairs**

Chrome frame, waterfall front lip, vented back to relieve back pressure and nylon glides. Artco-Bell, No Substitute.



KCDA No.	Size	Color	Mfg. No.	U/M
74007	11-1/2"	Blue, Navy	7101N5	Ea
71709	11-1/2"	Blue, Royal	7101-95B	Ea
73999	11-1/2"	Chocolate	7101-951	Ea
74006	11-1/2"	Burgundy	7101B5	Ea
74001	11-1/2"	Sand	710135	Ea
74021	11-1/2"	Teal	7101A5	Ea
74067	13-1/2"	Onyx	7103-D5	Ea
74015	13-1/2"	Blue, Navy	7103N5	Ea
73612	13-1/2"	Blue, Royal	7103-95B	Ea
74008	13-1/2"	Chocolate	7103-951	Ea
74013	13-1/2"	Burgundy	7103B5	Ea
74068	13-1/2"	Grey	7103K5	Ea
74026	13-1/2"	Blueberry	7103-95H	Ea
74009	13-1/2"	Sand	710335	Ea
74022	13-1/2"	Teal	7103A5	Ea
74018	15-1/2"	Onyx	710585	Ea
74035	15-1/2"	Blue, Navy	7105N5	Ea
71712	15-1/2"	Blue, Royal	7105-95B	Ea
74019	15-1/2"	Chocolate	7105-951	Ea
74032	15-1/2"	Burgundy	7105B5	Ea
74027	15-1/2"	Blueberry	7105-95H	Ea
74020	15-1/2"	Sand	710535	Ea
74023	15-1/2"	Teal	7105A5	Ea
74073	17-1/2"	Blue, Navy	7107N5	Ea
73611	17-1/2"	Blue, Royal	7107-95B	Ea
74036	17-1/2"	Chocolate	7107-951	Ea
74072	17-1/2"	Burgundy	7107B5	Ea
74070	17-1/2"	Grey	7107K5	Ea
74028	17-1/2"	Blueberry	7107-95H	Ea
74037	17-1/2"	Sand	710735	Ea
74024	17-1/2"	Teal	7107A5	Ea

**Artco Bell Stacking Chairs**

Powder coat frame and nylon guides. Waterfall design front lip vented back to relieve lower back pressure. Artco-Bell, No Substitute.



KCDA No.	Size	Seat Color	Frame	Mfg. No.	U/M
71707	13-1/2"	Blue, Navy	Black	7103N7	Ea
71705	13-1/2"	Blue, Royal	Black	7103-97B	Ea
70211	13-1/2"	Teal	Black	7103A7	Ea
71698	15-1/2"	Burgundy	Putty	7105B3	Ea
71733	15-1/2"	Burgundy	Titanium	7105-B4	Ea
71711	17-1/2"	Blue, Navy	Black	7107N7	Ea
71708	17-1/2"	Blue, Royal	Black	7107-97B	Ea
71699	17-1/2"	Burgundy	Putty	7107B3	Ea
71734	17-1/2"	Burgundy	Titanium	7107-B4	Ea
70218	17-1/2"	Grey	Black	7107K7	Ea
70213	17-1/2"	Teal	Black	7107A7	Ea

**Artco Bell Prodigy Stacking Chairs**

This chair offers upper back and lumbar support with back flex for comfort. The waterfall front edge of seat relieves pressure points and supports students in upright or forward leaning body positions. The seat/back is a single piece of high density polypropylene shell. The nylon champion glides are standard. Artco Bell, No Substitute.



KCDA No.	Size	Frame	Seat Color	Mfg. No.	U/M
73947	15-1/2"	Titanium	Ruby Red	P105-V4	Ea
73950	15-1/2"	Titanium	Taupe	P105-T4	Ea
73946	17-1/2"	Titanium	Ruby Red	P107-V4	Ea
73952	17-1/2"	Chrome	Indigo	P107-N5	Ea
73949	17-1/2"	Titanium	Taupe	P107-T4	Ea
73945	18-1/2"	Titanium	Ruby Red	P108-V4	Ea
73953	18-1/2"	Chrome	Indigo	P108-N5	Ea
73948	18-1/2"	Titanium	Taupe	P108-T4	Ea

**Classroom Select Stacking Chairs**

The seat features a one-piece injection molded, static free polypropylene shell with a double contoured seat and reinforced ribs. The frame is constructed from 1-1/8" 18-gauge tubular steel. The seat is attached on the underside with six steel rivets. Stacks 10 high. Classroom Select, No Substitute.



*• Must be ordered in a quantity of 4 each.*

KCDA No.	Size	Color	Frame	U/M
74284	15-1/2"	Blue, Navy	Chrome	Ea
74278	15-1/2"	Blue, Navy	Black Powder Coat	Ea
74287	15-1/2"	Burgundy	Chrome	Ea
74274	15-1/2"	Burgundy	Black Powder Coat	Ea
74283	17-1/2"	Blue, Navy	Chrome	Ea
74273	17-1/2"	Blue, Navy	Black Powder Coat	Ea
74279	17-1/2"	Burgundy	Chrome	Ea
74272	17-1/2"	Burgundy	Black Powder Coat	Ea

**\* Don't See What You Need Here?**  
*We can source it for you.*

Contact KCDA customer service with the details at [customerservice@kcda.org](mailto:customerservice@kcda.org) or 800-422-5019.

**Integrity Stacking Chairs**

These stacking chairs have a polypropylene seat and are ergonomically designed with lumbar and shoulder support. Marquis swivel nylon glides, 1" O.D. reinforced tubular steel, welded 16 gauge formed mounting brackets with 6 mounting rivets. Also available in 12, 14 & 16" heights. Alumni, No Substitute.



KCDA No.	Frame	Seat	Mfg. No.	U/M
<b>72130</b>	.....Chrome.....	Navy.....	C-INT-18CH	..... Ea

**Leland Ease Side Chair**

Stacking chair with sled base. Wood seat and back in sea grass 79 wood finish with metallic silver frame. This chair measures 19.5" wide x 22" deep x 31" high x 18.5 seat height. Leland, No Substitute.



KCDA No.	Mfg. No.	U/M
<b>72169</b>	.....ESSWW79-79-TBD.....	..... Ea

**National Public Seating Stacking Chairs**

These chairs feature a waterfall seat design, padded with 2" high density foam with a concealed double back. The frame is constructed from 7/8" square 18-gauge steel tubing. Self-leveling glides won't scuff floors. Built-in stack bar and 12 plastic stack bumpers help prevent wear and tear. The seat dimensions are 16" w x 15" d x 19" h, the overall dimensions are 17" w x 23" deep x 36" h. National Public Seating, No Substitute.



• Use chair caddy KCDA No. 71306.

KCDA No.	Seat/Frame	Mfg. No.	U/M
<b>79927</b>	..... Fabric, Midnight Blue/Black.....	9354-BT	..... Ea
<b>79935</b>	..... Vinyl, Black/Silvervein.....	9310SV	..... Ea
<b>79934</b>	..... Vinyl, Burgundy/Silvervein.....	9308SV	..... Ea

**Stacking Chair**

The one-piece shell has a textured surface, high impact, bluish resistant polypropylene plastic with an antistatic additive. The shell is molded with a rib pattern transferring weight directly to the frame and is attached with four concealed machine rivets. The frame is 16-gauge. All units are welded together with two seat brackets of 13-gauge die-formed steel. The frame is chrome plated. Chairs can be stacked within like sizes with the posi-lock stacking system. Qualifying Standard: USA Capitol.



KCDA No.	Color	Size	U/M
<b>72823</b>	..... Navy .....	18".....	..... Ea

**Stacking Chairs**

17-1/2" seat height, these chairs feature, all-tubular, concealed extra long welds and inserted X-braces. They have contoured chrome frame back for precise component fit, inside holding glides and can be stacked. Qualifying Standard: Capitol Seating, Legacy Series.



KCDA No.	Color	U/M
<b>78304</b>	.....Burgundy.....	..... Ea
<b>70667</b>	.....Navy.....	..... Ea
<b>78305</b>	.....Sand.....	..... Ea

**Stacking Chairs**

Soft plastic shell on tubular chrome frame. Qualifying Standard: Scholarcraft.



KCDA No.	Size	Color	U/M
<b>70193</b>	..... 11-1/2" .....	Cranberry.....	..... Ea
<b>70196</b>	..... 13-1/2" .....	Blue, Gulf.....	..... Ea
<b>70195</b>	..... 13-1/2" .....	Blue, Navy.....	..... Ea
<b>70197</b>	..... 13-1/2" .....	Cranberry.....	..... Ea
<b>70199</b>	..... 15-1/2" .....	Blue, Navy.....	..... Ea
<b>70201</b>	..... 15-1/2" .....	Cranberry.....	..... Ea
<b>70202</b>	..... 15-1/2" .....	Grey, Light.....	..... Ea
<b>70205</b>	..... 17-1/2" .....	Cranberry.....	..... Ea
<b>70204</b>	..... 17-1/2" .....	Blue, Gulf.....	..... Ea
<b>70203</b>	..... 17-1/2" .....	Blue, Navy.....	..... Ea
<b>70206</b>	..... 17-1/2" .....	Grey, Light.....	..... Ea

**Stylex Zephyr Chair**

Stacking side chair, armless with silver sled base and black mesh seat and back. 20" wide x 22" deep x 31" high x 17.5" seat height. Stylex Seating, No Substitute.



KCDA No.	Mfg. No.	U/M
<b>72167</b>	.....Z50-101-MS.....	..... Ea

**Virco 2000 Series Stacking Chairs**

Soft plastic shell with waterfall seat and chrome frame. Virco, No Substitute.



KCDA No.	Size	Color	Mfg. No.	U/M
<b>72110</b>	.....12".....	Blue, Navy.....	2012	..... Ea
<b>72113</b>	.....12".....	Burgundy.....	2012	..... Ea
<b>72112</b>	.....12".....	Orange, Sunset.....	2012	..... Ea
<b>72117</b>	.....14".....	Blue, Navy.....	2014	..... Ea
<b>72120</b>	.....14".....	Burgundy.....	2014	..... Ea
<b>72119</b>	.....14".....	Graphite.....	2014	..... Ea
<b>72124</b>	.....16".....	Blue, Navy.....	2016	..... Ea
<b>72127</b>	.....16".....	Burgundy.....	2016	..... Ea
<b>72136</b>	.....18".....	Black.....	2018	..... Ea
<b>72131</b>	.....18".....	Blue, Navy.....	2018	..... Ea
<b>72134</b>	.....18".....	Burgundy.....	2018	..... Ea



Please visit our website [www.kcda.org](http://www.kcda.org) for current prices on all products listed in the KCDA Reference Guide.

**Virco 3000 Series Stacking Chairs**

Martest solid plastic seat and back on a round tubular chrome frame legs have nylon base swivel. Virco, No Substitute.



KCDA No.	Size	Color	Mfg. No.	U/M
72660	12"	Blue, Navy	3012	Ea
72659	12"	Wine	3012	Ea
72664	14"	Blueberry	3014	Ea
72665	14"	Blue, Navy	3014	Ea
72672	14"	Burgundy	3014	Ea
72655	16"	Blueberry	3016	Ea
72682	16"	Blue, Navy	3016	Ea
72686	16"	Burgundy	3016	Ea
72685	16"	Graphite	3016	Ea
72687	16"	Red	3016	Ea
72657	16"	Sandstone	3016	Ea
72656	16"	Sea Mist	3016	Ea
72694	18"	Blueberry	3018	Ea
72689	18"	Blue, Navy	3018	Ea
72693	18"	Burgundy	3018	Ea
72691	18"	Graphite	3018	Ea
72692	18"	Red	3018	Ea
72658	18"	Sandstone	3018	Ea

**Virco 8915 Series Stacking Chairs**

These upholstered stacking chairs have a 2" seat crown that is made with high-density foam. The tubular steel frame is 7/8" and is complemented by a rear-leg H-brace and an underseat cross bar for added support. The seat height is 17-1/2". Virco, No Substitute.



KCDA No.	Fabric/Frame	Mfg. No.	U/M
79921	Sedona Ocean/Charcoal Black	8915	Ea
79920	Sedona Winter Green/Charcoal Black	8915	Ea
79914	Sedona Sailor/Charcoal Black	8915	Ea
79913	Sedona Sailor/Chrome	8915	Ea
79911	Sedona Sailor/El Dorado Bronze	8915	Ea
79904	Sedona Ruby/Silver Mist	8915	Ea
79902	Sedona Ruby/Charcoal Black	8915	Ea

**Virco 8917 Series Stacking Chairs**

These stacking chairs combine round-back styling with a 2" dome seat. 17-1/2" seat height. Virco, No Substitute.

• For stacking and moving these chairs, use Virco chair truck KCDA No. 71838.



KCDA No.	Fabric/Frame	Mfg. No.	U/M
79919	Sedona Sailor/Black	8917	Ea
79916	Burgundy/Black	8917	Ea
79918	Burgundy/Mocha	8917	Ea
79117	Evergreen/Black	8917	Ea



**Don't See What You Need Here?**

*We can source it for you.*

Contact KCDA customer service with the details at [customerservice@kcda.org](mailto:customerservice@kcda.org) or 800-422-5019.

**Virco 9000 Series Stacking Chairs**

One piece polyethylene shell with three ventilation slots. Heavy gauge swagged tubular steel legs, chrome frame and nylon base swivel glides. Virco, No Substitute.



KCDA No.	Size	Color	Mfg. No.	U/M
72705	12"	Blue, Navy	9012	Ea
72745	12"	Green, Forest	9012	Ea
72703	12"	Red	9012	Ea
72704	12"	Squash	9012	Ea
72709	12"	Wine	9012	Ea
72724	14"	Blue, Navy	9014	Ea
72725	14"	Graphite	9014	Ea
72765	14"	Green, Forest	9014	Ea
72717	14"	Red	9014	Ea
72718	14"	Squash	9014	Ea
72719	14"	Wine	9014	Ea
72740	16"	Blue, Navy	9016	Ea
72742	16"	Graphite	9016	Ea
72764	16"	Green, Fores	9016	Ea
72732	16"	Red	9016	Ea
72733	16"	Squash	9016	Ea
72734	16"	Wine	9016	Ea
72762	18"	Black	9018	Ea
72759	18"	Blue, Navy	9018	Ea
72761	18"	Graphite	9018	Ea
72763	18"	Green, Forest	9018	Ea
72756	18"	Red	9018	Ea
72757	18"	Squash	9018	Ea
72758	18"	Wine	9018	Ea

**Virco 9018P Series Stacking Chairs**

Fabric cushions on seat and back, one piece polyethylene shell three ventilation slots, heavy gauge swagged tubular steel legs, chrome frame, seat height is 18", nylon base swivel glides. Virco, No Substitute.



KCDA No.	Fabric	Mfg. No.	U/M
72786	Blue, Navy	9018P	Ea
72781	Graphite	9018P	Ea
72782	Wine	9018P	Ea

**Virco 9600 Series Stacking Chairs**

One piece polyethylene shell with three ventilation slots. Heavy gauge swagged tubular steel legs, chrome frame with sled base for carpet use only. Virco, No Substitute.



KCDA No.	Size	Color	Mfg. No.	U/M
72795	12"	Blue, Navy	9612	Ea
72789	14"	Blue, Navy	9614	Ea
72863	14"	Graphite	9614	Ea
72788	14"	Wine	9614	Ea
72867	16"	Black	9616	Ea
72791	16"	Blue, Navy	9616	Ea
72868	16"	Graphite	9616	Ea
78131	16"	Green, Forest	9616	Ea
72874	18"	Black	9618	Ea
72793	18"	Blue, Navy	9618	Ea
72873	18"	Graphite	9618	Ea
72870	18"	Red	9618	Ea
72871	18"	Squash	9618	Ea
72872	18"	Wine	9618	Ea

**Virco Comfort Series Stacking Chairs**

These popular stacking chairs give you a padded, upholstered seat and back. Seat height is 17" the overall height is 33". Charcoal color, heavy-gauge, tubular steel frame reinforced with dual underseat cross braces. Virco, No Substitute.



• Use Virco chair truck HCT4.

KCDA No.	Fabric	Description	Mfg. No.	U/M
79901	Burgundy	No Arms	8802	Ea
79500	Sedona Sailor	No Arms	8802	Ea
79501	Sedona Sairor	With Arms	8806	Ea

**Virco I.Q. Stacking Chairs**

These chairs feature a contoured, flexible shell incorporating comfortable lumbar support. Virco, No Substitute.



KCDA No.	Size	Color	Mfg. No.	U/M
72230	15-1/2"	Navy	264615	Ea
72237	17-1/2"	Black	264617	Ea
72236	17-1/2"	Graphite	264617	Ea
72234	17-1/2"	Navy	264617	Ea
72235	17-1/2"	Wine	264617	Ea

**Virco Zuma Series Stacking Chairs**

These chairs were designed for comfort and durability, with a flexible seat bucket combined with a rock-solid frame it is designed to be the next generation of classroom seating. Virco, No Substitute.



These chairs measure:

- 13" size A) 13", B) 15-3/8", C) 14-7/8", D) 23-1/4".
- 15" size A) 15", B) 17-3/8", C) 16-1/2", D) 26-7/8".
- 18" size A) 18", B) 20-3/8", C) 20-7/8", D) 32-1/4".

KCDA No.	Height	Color/Frame	Mfg. No.	U/M
72751	13"	Navy/Chrome	ZU413	Ea
72752	15"	Navy/Chrome	ZU415	Ea
72755	18"	Black/Chrome	ZU418	Ea
72753	18"	Navy/Chrome	ZU418	Ea
72750	18"	Squash/Chrome	ZU418	Ea

**COMPUTER FURNITURE / ACCESSORIES**

**Hon Keyboard Tray**

Slide-away, 21-1/2" x 10". Hon, No Substitute.



KCDA No.	Finish	Mfg. No.	U/M
73219	Harvest	H4022-C	Ea

**Hon Keyboard/Mouse Platform**

The tray is made with 1/4" rigid black phenolic material with detachable gel palm rest, non-slip pads and mouse guard. Adjustable mouse platform. The mechanism features a 21" glide track, lift and lock height adjustment and release handle to adjust tilt. Includes cord management clips, mounting hardware and instructions. Hon, No Substitute.



- Keyboard tray measures 18.75" w x 11.5" d.
- Mouse tray measures 9.25" w x 9.25" d.

KCDA No.	Mfg. No.	U/M
78419	H2107	Ea

**Keyboard and Mouse Tray**

Standard platform designed to support nearly all standard keyboards and to fit most desks it measures 20-3/4" wide x 9-1/2" deep. This is an articulating keyboard system that adjusts effortlessly with one handed motion which allows the keyboard to be repositioned instantly. The height adjustment is 6.825", 2.625" above track to 4.25" below track. Platforms are graphite spektrum color with a right side mouse platform. Qualifying Standard: Humanscale.



• 19% Recycled PCW.

KCDA No.	U/M
78415	Ea

**Keyboard and Mouse Tray**

The curved keyboard platform is designed to support most "ergonomic" keyboards, it measures 19" wide x 10.625" deep. This is an articulating keyboard system that adjusts effortlessly with one handed motion which allows the keyboard to be repositioned instantly. The height adjustment is 6.25", 1.25" above track to 5" below track. Platforms are graphite spektrum color with a right side mouse platform. Qualifying Standard: Humanscale.



• 19% Recycled PCW.

KCDA No.	U/M
78414	Ea

**Keyboard Tray**

Grey, 23-3/4"x12-1/2". Qualifying Standard: Bretford.



KCDA No.	U/M
74832	Ea

**Virco Keyboard/Mouse Trays**

The retractable keyboard mouse tray works with Virco's Future Access and 8700 Series tables. It comes in two sizes: 29" long x 12" deep for use with rectangular tables, and 27" long x 12" deep for use with half round or trapezoidal tables. Virco, No Substitute.



KCDA No.	Width	Mfg. No.	U/M
78417	27"	TKBMT27	Ea
74778	29"	TKBMT29	Ea

**Table Riser Shelf**

16" deep x 30" wide x 12-22" high, maple/charcoal/champagne. Qualifying Standard: Smith System. • Fits KCDA No. 73538.



KCDA No.	U/M
73537	Ea



Please visit our website [www.kcda.org](http://www.kcda.org) for current prices on all products listed in the KCDA Reference Guide.

**COMPUTER FURNITURE / CARTS**

**Cloud 32 Chromebook Cart**

Manage up to 32 Chromebooks in one cart, overhead cord management places plugs directly above devices. Padded bays cradle and protect the device by reducing vibration. The ventilation power adapter posts allow separation for heat to dissipate and exit cart. Easing rolling on 5" balloon wheels. Double bolt lock and all steel construction. 26-15/16" width with handle, 24" deep x 45-13/15 high with wheels. White fiesta & silver sparkle color combination. Spectrum, No Substitute.



KCDA No.	Mfg. No.	U/M
<b>71108</b>	55465 WFS BW	.....Ea

**In Touch32 Tablet Cart**

Holds 32 tablets in one compact cart, small footprint. Protects tablets with padding in each bay. 5" balloon wheels, two locking options. Allows charging and storage without removing covers or cases. Exterior power switch and auxiliary outlets, cord management places plugs directly above devices. 18" wide x 27-3/8" deep x 44-13/16" high, white fiesta & silver sparkle color combination. Spectrum, No Substitute.



KCDA No.	Mfg. No.	U/M
<b>71109</b>	55432 WFS-BW	.....Ea

**COMPUTER FURNITURE / WORKSTATIONS/TABLES**

**Evolution Computer Desk**

These desks are designed for comfort and functionality. Full bullnose edge, connectible work surfaces, full desk width flip top door for easy cable and wire access. Steel legs located at edges of desk maximize leg room and a steel modesty panel. 36" wide x 24" deep with adjustable height 24 to 32". cherry top with black frame. Spectrum, No Substitute.



KCDA No.	Mfg. No.	U/M
<b>71107</b>	38912 ADJ-CHB	.....Ea

**Flex InSight Desk**

Switch from traditional classroom to computer lab easily with a monitor compartment that protects and holds the flat panel monitor, keyboard and mouse, no lock. VESA monitor mount allows pan and tilt for optimal viewing angles. The compartment will hold up to a 24" monitor, friction dampener on monitor lid provides support and slows the lowering of the lid. 36" wide x 30" deep x 29" high, fusion maple top, black frame. Spectrum, No Substitute.



KCDA No.	Mfg. No.	U/M
<b>71106</b>	38955 CHB	.....Ea

**Mobile Computer Tables**

These quartz color mobile tables measure 30" deep, the height adjusts from 24" to 30" in 1" increments. Features include a cord management bin, modesty panel, grommet holes and 4" casters. Qualifying Standard: Bretford.



KCDA No.	Width	Grommet Holes	U/M
<b>74822</b>	36"	1	.....Ea
<b>74823</b>	48"	2	.....Ea

**Mobile Computer Table**

This table measures 30" wide x 38" deep, and the color is gray. The adjustable work surface is positioned in a 12-3/4" travel range, 7" above or 5-3/4" below the rear stationary surface. Table can be adjusted for standing or sitting. The surface tilts 9 degrees forward or 15 degrees away. 3 shelves 2 are adjustable in 1" increments. Includes locking casters, at standard setting cart is 31" high. Qualifying Standard: Anthro.



KCDA No.	U/M
<b>74351</b>	.....Ea

**Mobile Computer Tables**

Adjustable, power strip, 24" x 48", main, upper shelf 12" x 48", lower shelf 9" x 46". Qualifying Standard: Orion.



KCDA No.	Top/Frame	U/M
<b>73548</b>	Grey/Black	.....Ea
<b>73547</b>	Oak/Putty	.....Ea

**Mobile Projector and Laptop Computer Cart**

Use the top shelf for projectors/cameras with room for presentation materials. The adjustable shelf can be set at seated or standing heights with 3 adjustments. The bottom shelf accommodates additional materials or a printer. The rear cord-management bin keeps power and data cables organized. Made of steel construction, black powder coat with 4" casters, two locking and two fixed. This cart measures 32"wx24"dx42"h. Qualifying Standard: Bretford.



• 30% post-consumer recycled steel.

KCDA No.	Description	Color	U/M
<b>73544</b>	With Shelf	Black	.....Ea
<b>73545</b>	No Shelf	Black	.....Ea

**Mobile Computer Tables**

30" deep, light gray, locking casters, raceway cover. Qualifying Standard: Shuttlemate.



KCDA No.	Height	Width	U/M
<b>78137</b>	25"	30"	.....Ea
<b>78250</b>	28"	30"	.....Ea
<b>78249</b>	28"	60"	.....Ea

**Stationary Computer Table**

Charcoal/champagne, 24" deep x 30" wide, adjustable height 24-36". Qualifying Standard: Smith System.



KCDA No.	U/M
<b>73538</b>	.....Ea

Furniture



**Virco Future Access Stationary Computer Tables**

These tables give you a variety of layout options for technology-based learning environments. Tables tops feature Grey Nebula high-pressure laminate surfaces. The laminated extends over the post-formed front and rear edges of rectangular tops, while their side edges have a flat, 3 mil PVC surface for smooth, uniform connections with other tables. A generous wire management panel is standard on every table. Adjustable from 22" to 30", grommet hole(s). Virco, No Substitute.



KCDA No.	Description	Size	Mfg. No.	U/M
74768	Half Round	48"	87PFHR48	Ea
74769	Half Round	60"	87PFHR60	Ea
74770	Half Round	84"	87PFHR84	Ea
74760	Rectangular	24"x36"	87PF2436	Ea
74761	Rectangular	24"x48"	87PF2448	Ea
74762	Rectangular	24"x60"	87PF2460	Ea
74763	Rectangular	24"x72"	87PF2472	Ea
74764	Rectangular	30"x36"	87PF3036	Ea
74766	Rectangular	30"x60"	87PF3060	Ea
74767	Rectangular	30"x72"	87PF3072	Ea

**Virco 8700 Stationary Computer Tables**

This table selection offers a variety of layout options for learning environments & computer use. Table tops are surfaced with high-pressure laminate finishes. Table edges have rounded corners and are wrapped with our protective T-mold banding. Cantilevered, steel legs give table added strength & support and are adjustable from 22" to 30". Virco, No Substitute. Virco offers a wide variety of colors and sizes please call if more information is needed.



KCDA No.	Description	Size	Finish	Mfg. No.	U/M
74452	Rectangular	24"x36"	Grey Nebula	872436	Ea
72821	Rectangular	24"x48"	Gret Nebula	872448	Ea
74784	Rectangular	24"x60"	Grey Nebula	872460	Ea
72813	Rectangular	30"x60"	Grey Nebula	873060	Ea
74450	Rectangular	24"x36"	Medium Oak	872436	Ea
72816	Rectangular	24"x48"	Medium Oak	872448	Ea
74785	Rectangular	24"x60"	Medium Oak	872460	Ea
74787	Rectangular	24"x72"	Medium Oak	872472	Ea
74789	Rectangular	30"x36"	Medium Oak	873036	Ea
74791	Rectangular	30"x48"	Medium Oak	873048	Ea
72818	Rectangular	30"x60"	Medium Oak	873060	Ea
74454	Rectangular	30"x72"	Medium Oak	873072	Ea
74458	Rectangular	36"x72"	Medium Oak	873672	Ea
74451	Rectangular	24"x36"	Walnut	872436	Ea
72817	Rectangular	24"x48"	Walnut	872448	Ea
74786	Rectangular	24"x60"	Walnut	872460	Ea
74788	Rectangular	24"x72"	Walnut	872472	Ea
74790	Rectangular	30"x36"	Walnut	873036	Ea
72815	Rectangular	30"x60"	Walnut	873060	Ea
74455	Rectangular	30"x72"	Walnut	873072	Ea
74459	Rectangular	36"x72"	Walnut	873672	Ea

**Trapezoid Tables**

74801	24"x24"x24"x48"	Medium Oak	87TRAp48	Ea
74802	24"x24"x24"x48"	Walnut	87TRAP48	Ea
74803	30"x30"x30"x60"	Medium Oak	87TRAP60	Ea
74805	42"x42"x42"x84"	Medium Oak	87TRAP84	Ea
74806	42"x42"x42"x84"	Walnut	87TRAP84	Ea
74809	24"x24"x24"x48"	Medium Oak	USHLFTRAP48	Ea
74810	24"x24"x24"x48"	Walnut	USHLFTRAP48	Ea

**Stationary Computer Table**

Charcoal/champagne, 24" deep x 30" wide, adjustable height 24-36". Qualifying Standard: Smith System.  
 • For riser shelf see KCDA No. 73537.



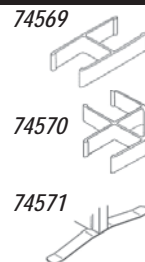
KCDA No.	U/M
73538	Ea

**CUBICAL SYSTEMS**

**Hon Room Divider Connectors**

Light grey, use to connect Hon panels, KCDA Nos. 74567 & 74568. Hon, No Substitute.

- KCDA No. 74569, 180 degree, straight panel connector.
- KCDA No. 74570, 90 degree panel connector.
- KCDA No. 74571, T-base panel stabilizing foot, 2 are needed if panel stands alone.



KCDA No.	Mfg. No.	U/M
74569	HBV-QC180.Q	Pair
74570	HBV-QC90.Q	Pair
74571	HBV-TBASE.Q	Ea

**Hon Room Dividers**

These room dividers have fabric panels in the veil color, and the trim is light grey. The glides are adjustable. Hon, No Substitute.



- For connectors see KCDA Nos. 74569, 74570 and 74571.

KCDA No.	Size	Mfg. No.	U/M
74567	60" H x 36" W	HBV-P6036.GN13.Q	Ea
74568	60" H x 48" W	HBV-P6048.GN13.Q	Ea

**DESKS / CARRELS**

**Virco Study Carrels**

Study carrels have a 24"x 36" work surface with privacy panels and a shelf. Medium oak top, black/chrome frame. T-legs are adjustable in 1" increments, from 22" to 30". Virco, No Substitute.

*Straight Legs*



*T-Legs*



KCDA No.	Description	Color	Mfg. No.	U/M
73468	Straight Legs	Grey Nebula	402436SC	Ea
74466	Straight Legs	Oak	402436SC	Ea
73467	T-Legs	Grey Nebula	872436SC	Ea
74465	T-Legs	Oak	872436SC	Ea

**DESKS / OFFICE/TEACHER / METAL**

**Hon Metal Desks**

Double pedestal metal desks measure 72" wide x 36" deep, includes center locking drawer, 2 box/file pedestals and grommet holes on desk top with painted legs and overhang. Hon, No Substitute.



KCDA No.	Top/Frame	Mfg. No.	U/M
73445	Columbian Walnut/Putty	P3276ZL	Ea
73451	Columbian Walnut/Black	P3276ZP	Ea



Please visit our website [www.kcda.org](http://www.kcda.org) for current prices on all products listed in the KCDA Reference Guide.

**Hon Metal Desks**

Double pedestal desk measures 60" wide x 30" deep, includes locking center drawer, 2 box/file pedestals, and 2 grommet holes on desk top and painted legs. Hon, No Substitute.



KCDA No.	Top/Frame	Mfg. No.	U/M
73381	Harvest/Black	HP3262.C.P	Ea
73391	Harvest/Grey, Light	HP3262.C.Q	Ea
73304	Harvest/Putty	HP3262.C.L	Ea
73392	Harvest/Charcoal	HP3262.C.S	Ea
73326	Columbia Walnut/Black	P3262WP	Ea
73328	Columbia Walnut/Grey, Light	P326WQ	Ea
73320	Columbia Walnut/Putty	P3262WL	Ea

**Hon Metal Desks**

Single right pedestal desks measure 48" wide x 30" deep, includes locking center drawer, 1 box/file pedestal and grommet holes on desk top. Painted legs. Hon, No Substitute.



KCDA No.	Top/Frame	Mfg. No.	U/M
73378	Harvest/Black	HP3251.R.C.P	Ea
73390	Harvest/Grey, Light	HP3251.R.C.Q	Ea
73389	Harvest/Putty	HP3251.R.C.L	Ea
73375	Harvest/Charcoal	HP3251R.C.S	Ea
73368	Columbia Walnut/Black	P3251RWP	Ea
73362	Walnut/Putty	P3251RWL	Ea

**Hon Metal Desks**

Double pedestal desk measures 60" wide x 30" deep x 29-1/2" high, 4 side drawers including center locking drawer, square tube painted legs. Harvest laminate top. Hon, No Substitute.



KCDA No.	Frame	Mfg. No.	U/M
73376	Charcoal	H88962.C.S	Ea
73307	Putty	H88962.C.L	Ea

**Hon Metal Desks**

Single pedestal desks measure 66" wide x 30" deep. Includes: center locking drawer, 1 box/file pedestal and grommet holes on desk top. Hon, No Substitute.



• For desk returns see KCDA Nos. 74618, 74640, 74641, 74642, 74643, 74652, 74653, 74654, 74658, 74660 & 74661.

KCDA No.	Top/Frame	Mfg. No.	U/M
<b>Left Pedestal Desks</b>			
73387	Harvest/Black	HP3266L.C.P	Ea
74632	Harvest/Charcoal	P3266LMS	Ea
74628	Harvest/Grey, Lt.	P3266LMO	Ea
73386	Harvest/Putty	HP3266.C.L	Ea
74622	Columbian Walnut/Black	P3266LPZ	Ea
74630	Columbian Walnut/Charcoal	P3266LPZ	Ea
74626	Columbian Walnut/Grey, Lt.	P3266LZS	Ea
74610	Columbian Walnut/Putty	P3266LZL	Ea

**Right Pedestal Desks**

74617	Harvest/Charcoal	HP3265R.C.S	Ea
74616	Harvest/Grey, Lt.	HP3265R.C.Q	Ea
74614	Harvest/Putty	HP3265R.C.L	Ea
74623	Columbian Walnut/Black	P3265RZP	Ea
74631	Columbian Walnut/Charcoal	P3265RZS	Ea
74611	Columbian Walnut/Putty	P3265RZL	Ea

**Virco Metal Desks**

Top of high-pressure laminate, T-mold edge box drawers, double wall construction, nylon roller bearings, full cradle suspension, desk legs of 1" chrome polished tubular steel. Virco, No Substitute.



- KCDA Nos. 73480 & 73481 have 2 drawers and are single right pedestal.
- KCDA Nos. 73485 & 73486 have 5 drawers and are double pedestal.



KCDA No.	Size	Top/Frame	Mfg. No.	U/M
73481	48"x30"	Grey Nebula/Charcoal	543	Ea
73480	48"x30"	Med. Oak/Charcoal	543	Ea
73486	60"x30"	Grey Nebula/Charcoal	546	Ea
73485	60"x30"	Med. Oak/Charcoal	546	Ea

**DESKS / OFFICE/TEACHER / METAL RETURNS**

**Hon Metal Desk Returns**

42"x24" deep x 29-1/2" high, with box/file. Hon, No Substitute.



- These returns fit desks KCDA Nos. 73386, 73387, 74610, 74611, 74614, 74616, 74617, 74622, 74623, 74626, 74628, 74630, 74631 & 74632.

KCDA No.	Side	Top/Frame	Mfg. No.	U/M
74618	Left	Harvest/Charcoal	HP3236L.C.S	Ea
74643	Left	Harvest/Putty	P3236LML	Ea
74653	Left	Columbian Walnut/Black	P3236LZP	Ea
74661	Left	Columbian Walnut/Charcoal	P3236LZS	Ea
74641	Left	Columbia Walnut/Putty	P3236LZL	Ea
74654	Right	Harvest/Black	P3235RMP	Ea
74658	Right	Harvest/Light Grey	P3235RMQ	Ea
74642	Right	Harvest/Putty	P3235RML	Ea
74652	Right	Columbian Walnut/Black	P3235RZP	Ea
74660	Right	Columbian Walnut/Charcoal	HP3235R.Z.S	Ea
74640	Right	Columbia Walnut/Putty	P3235RZL	Ea

**DESKS / OFFICE/TEACHER / WOOD**

**Double Pedestal Executive Wood Desk**

This double pedestal desk measures 60"x30". box/file drawers with a center locking drawer and brushed nickel handles. The desk top & end panels are thermofused high pressure laminate 1" thick on high density solid core particle board. All other parts are 3/4" thick thermofused polyester laminate on high density particle board. A black shadow strip between the top and end panels "Floating top". End panels have a adjustable leg levelers (glides). Qualifying Standard: Cambridge Gavco Series.



KCDA No.	Finish	U/M
73301	English Oak	Ea
73345	Solar Oak	Ea

**Hon Desk Shell**

This shell desk has a harvest laminate surface; it measures 60" wide x 30" deep x 29-1/2" high and includes a full modesty panel and 2 grommets. Hon, No Substitute.



- Matching file cabinet available see KCDA No. 73256.

KCDA No.	Mfg. No.	U/M
73255	H10578.CC	Ea

**Hon Wood Desks**

Single pedestal desks measure 66" wide x 30" deep, includes locking box/file pedestal, harvest high pressure laminate finish, 4-1/2" overhang rectangle top with 2 grommet holes. Hon, No Substitute.



- KCDA No. 73245 for desk return see KCDA No. 73246.
- KCDA No. 73244 for desk return see KCDA No. 73247.

KCDA No.	Desc	Mfg. No.	U/M
73245	Left Pedestal	H10584L.C.C	Ea
73244	Right Pedestal	H10583R.C.C	Ea

**Performance Teacher's Wood Desk**

This teacher's desk measures 30" x 60" and includes a right hanging box/file pedestal. Laminate shell and pedestal in a honey color with matching 3mm PVC edge. Performance, No Substitute.



KCDA No.	Mfg. No.	U/M
70999	PL103/PL107	Ea

**Wood Desks**

Single pedestal desk measures 48" wide x 30" deep with solar oak laminate. Qualifying Standard: Custom Office Design.



- Center drawer not included but it is available see KCDA No. 73332.

KCDA No.	Description	U/M
73334	Box/File Right	Ea
73335	Box/File Left	Ea

**Wood Desks**

Single pedestal measures 60" wide x 30" deep, Solar Oak laminate. Qualifying Standard: Custom Office Design.



Center drawer not included but it is available see KCDA No. 73332.

- 73346 fits return KCDA No. 73336
- 73347 fits return KCDA No. 73337

KCDA No.	Description	U/M
73346	Box/File Left	Ea
73347	Box/File Right	Ea

**Wood Desks**

Double pedestal, laminate finish, box/file with center drawer. These desks measure 30" deep x 29" high. These desks come unassembled but are easy to assemble. Qualifying Standard: Custom Office Design.

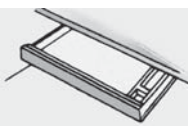


KCDA No.	Width	Laminate	U/M
73348	60"	Solar Oak	Ea
73382	72"	Solar Oak	Ea

**DESKS / OFFICE/TEACHER / WOOD CENTER DRAWERS**

**Center Desk Drawer**

Wood, 21" wide, Solar Oak laminate finish. Installation hardware included. Qualifying Standard: COD.

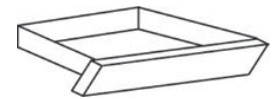


- Use on desks, KCDA Nos. 73334, 73335, 73346 and 73347.

KCDA No.	U/M
73332	Ea

**Hon Center Desk Drawer**

Laminated oak finish, angle faced. Installation hardware included. Hon, No Substitute.



- 73211 measures 22" wide x 15-3/8" deep
- 73212 measures 26" wide x 15-3/8" deep.

KCDA No.	Finish	Mfg. No.	U/M
73211	Harvest	H1522.C	Ea
73212	Harvest	H1526.C	Ea
73250	Columbian Walnut	H1526.Z	Ea

**DESKS / OFFICE/TEACHER / WOOD RETURNS**

**Desk Returns**

Solar Oak laminate, 21"x48", box/file drawers. Qualifying Standard: Custom Office Design.



- 73336 fits desk KCDA No. 73346
- 73337 fits desk KCDA No. 73347

KCDA No.	Description	U/M
73337	Left Return	Ea
73336	Right Return	Ea

**Hon Desk Returns**

Harvest laminate, box/file, 42" wide x 24" deep x 29-1/2" high. Hon, No Substitute.



- KCDA No. 73247 fits desk KCDA No. 73244.
- KCDA No. 73246 fits desk KCDA No. 73245.

KCDA No.	Description	Mfg. No.	U/M
73246	Right Return	H10511R.C	Ea
73247	Left Return	H10512L.C	Ea

**DESKS / STUDENT**

**AlphaBetter Stand-Up Desk**

Designed for students in grades 3-12, this desk easily adjusts from 26" to 42" high to allow students the choice to stand or sit while in the classroom. The footrest allows students to swing their feet providing extra movement to burn off excess energy. Lower shelf provides additional storage of books and supplies. The top is beige MDF and is 28" wide x 20" deep, the steel frame is black powder coated for durability. Safco, No Substitute.



- For stool see KCDA No. 71100.

KCDA No.	Mfg. No.	U/M
71099	1201BE	Ea

**Artco Bell Student Desks**

These junior executive desks, measures 18" deep x 34" wide with adjustable height from 22 to 29 inches. Desk frame is black epoxy powder coated. These desks includes a modesty panel, a large steel mounted book box. A wrap around brace connects all four legs. Four chrome leg inserts fitted with nylon base swivel glides. Artco Bell, No Substitute.



KCDA No.	Book Box/Color	Mfg. No.	U/M
74088	Left Side/Nepal Teak	2111-7-72	Ea
74083	Right Side/Grey Glace	2121-7-18	Ea
74089	Right Side/Nepal Teak	2121-7-72	Ea



Please visit our website [www.kcda.org](http://www.kcda.org) for current prices on all products listed in the KCDA Reference Guide.

**Artco Bell Student Desks**

Open front, 18"x24" top, includes a open front steel book-box. Black frame with adjustable legs from 22" to 29". Artco Bell, No Substitute.

KCDA No.	Top Finish	Mfg. No.	U/M
<b>74076</b>	Nepal Teak	9500-7-72	Ea



**IFC Double Student Desk**

This rectangular table measures 24" deep x 48" wide it has a grey nebula laminate performance top and the height is fixed at 30". The pedestal legs are made with oval tubular steel with a silver epoxy finish, and also includes nylon leveling glides. Institutional Furniture Concepts, No Substitute.

KCDA No.	Mfg. No.	U/M
<b>73168</b>	TTS2448	Ea



**Student Desk**

Open front, this table top is made of solid molded thermoset plastic and measures 18" deep x 24" wide x 5/8" thick. The frame is 1-1/8" diameter, 18 gauge legs are welded together with two brackets of 13 gauge steel. Open front bookbox 4-1/2"x22"x15", 20 gauge one piece steel. Chrome inserts with glides. Qualifying Standard: USA Capitol.

KCDA No.	Description	U/M
<b>72819</b>	Sand Top, Black Bookbox/Frame	Ea



**Student Desks**

19"x24" top. Adjustable legs from 21" to 29", tubular steel twin pedestal base in black powder finish. Qualifying Standard: Classroom Select.

KCDA No.	Description	U/M
<b>72808</b>	Lift Up Top/Almond Leather (Off White)	Ea
<b>72809</b>	Lift Up Top/Light Oak	Ea
<b>72519</b>	Open Front/Almond Leather (Off White)	Ea
<b>72520</b>	Open Front/Light Oak	Ea



**Virco Student Desk**

24"x48" top with a medium oak laminate work surface. Adjustable legs, 22" to 30". A traditional desk or activity table with a tubular steel base and a plywood work surface. Includes twin book boxes and a black frame. Virco, No Substitute.

KCDA No.	Mfg. No.	U/M
<b>58306</b>	792448BB	Ea



**Virco Student Desk**

18"x24", with a sandstone color hard plastic top. This single desk has an "open view" tubular steel book box. The height adjusts from 25" to 30". Virco, No Substitute.

KCDA No.	Mfg. No.	U/M
<b>72820</b>	72BRLBM	Ea



**Virco Student Desk**

18"x34" high density particle board top measures with melamine plastic finish in medium oak. Legs adjust from 22" to 30", with chrome inserts and rubber cushioned glides. Side book box in charcoal, 15" deep x 11" wide x 15" high. Deep front modesty panel. Virco, No Substitute.

KCDA No.	Mfg. No.	U/M
<b>72800</b>	765	Ea



**Virco Student Desk**

Open front desk, 18"x24" medium oak high-pressure laminate work surface. The plastic book box and upper desk frame is charcoal color. Chrome lower legs with nylon base glides adjust from 22" to 30". Virco, No Substitute.

KCDA No.	Mfg. No.	U/M
<b>72810</b>	785	Ea



**Virco Student Desk**

Open front desk, 18"x24" sandstone hard plastic work surface. The plastic book box and upper desk frame is charcoal color. Chrome lower legs with nylon base glides adjust from 22" to 30". Virco, No Substitute.

KCDA No.	Mfg. No.	U/M
<b>72802</b>	785M	Ea



**Virco Student Desks**

Laminated oak top, charcoal plastic book box and frame. Chrome inserts adjusts height from 22" to 30". Virco, No Substitute.

KCDA No.	Size	Mfg. No.	U/M
<b>72814</b>	20"x26", One Student	871	Ea
<b>72812</b>	24"x48", Two Student	878	Ea



**Virco Student Desks**

The surface of these desks are made with high-pressure laminate and measure 18"x24". Metal book box. Chrome lower legs that adjust from 22" to 30" with rubber cushion glides. Virco, No Substitute.

KCDA No.	Description	Mfg. No.	U/M
<b>68825</b>	Lift Top/Grey Nebula	751MMB	Ea
<b>72805</b>	Lift Top/Oak	751MMB	Ea
<b>72803</b>	Open Front/Medium Oak	785MBB	Ea
<b>72804</b>	Open Front/Grey Nebula	785MBB	Ea



**Virco Zuma Student Desk**

This desk is great for classrooms with high density layouts because of its compact footprint. The top measures 20"x26-1/8" and is made of hard plastic that resists staining and chipping. The 4 leg design adjusts from 22" to 32" in height. The top color is medium oak, the legs are two tone with the upper color silver mist and the lower leg a chrome finish. Virco, No Substitute.

KCDA No.	Mfg. No.	U/M
<b>72825</b>	ZADJ2026M	Ea



Furniture

**DESKS / STUDENT DESK/CHAIR COMBINATIONS**

**Artco Bell Chair/Desk Combination**

18"x24" writing surface, nepal teak laminate top and chrome frame. The seat is a one piece, molded plastic shell and the seat height is 17-1/2". Artco Bell, No Substitute.



KCDA No.	Description	Mfg. No.	U/M
<b>74002</b>	No Book Rack, Dutch Blue Seat	7407-CH	Ea
<b>74003</b>	No Book Rack, Navy Seat	7407-CH	Ea
<b>74081</b>	With Book Rack, Navy	7457-CH	Ea

**Chair/Desk Combination**

The seat is made in one piece high impact molded polypropylene plastic attached to the frame with concealed rivets. The top is molded plastic with smooth edges with a pencil groove. The frame is 1-1/8" diameter, 16 gauge tube legs, with side a side brace, the rear legs and top support are welded to two seat brackets of 13 gauge steel. Qualifying Standard: USA Capitol.



KCDA No.	Seat/Top	U/M
<b>72822</b>	Navy/Sand	Ea

**Virco 3400 Series Chair/Desk Combination**

Molded hard plastic seat and back, chrome tubular steel frame, hard plastic sandstone top. 18" seat height. Virco, No Substitute.

- 18"x24" writing surface without long arm.
- 18"x21" writing surface, 30" with long arm.



KCDA No.	Color	Mfg. No.	U/M
<i>No Book Rack</i>			
<b>72551</b>	Blue, Navy	3400NBR	Ea
<b>72521</b>	Green, Forest	3400NBR	Ea
<b>72552</b>	Wine	3400NBR	Ea
<i>No Book Rack, Long Arm Top</i>			
<b>72559</b>	Blue, Navy	3400LANBR	Ea
<b>72558</b>	Graphite	3400LANBR	Ea
<b>72525</b>	Green, Forest	3400LANBR	Ea
<b>72526</b>	Red	3400LANBR	Ea
<i>With Book Rack</i>			
<b>72555</b>	Blue, Navy	3400BR	Ea
<b>72523</b>	Green, Forest	3400BR	Ea
<b>72524</b>	Red	3400BR	Ea
<b>72556</b>	Wine	3400BR	Ea
<i>With Book Rack, Long Arm Top</i>			
<b>72566</b>	Blue, Navy	3400LABR	Ea
<b>72527</b>	Green, Forest	3400LABR	Ea
<b>72528</b>	Red	3400LABR	Ea
<b>72562</b>	Wine	3400LABR	Ea



Please visit our website [www.kcda.org](http://www.kcda.org) for current prices on all products listed in the KCDA Reference Guide.

**Virco 2400BR Series Chair/Desk Combination**

18"x24" writing surface with a high-pressure medium oak laminate top. The seat and back are navy with a seat height of 18", the frame is chrome and includes a welded-on bookrack. Virco, No Substitute.



KCDA No.	Mfg. No.	U/M
<b>72142</b>	2400BR	Ea

**Virco 9400BR Series Chair/Desk Combination**

24"x18" writing surface. Durable high-pressure laminated medium oak top. The seat is one piece molded soft plastic with vents and includes a underseat steel-rod bookrack. Virco, No Substitute.



KCDA No.	Color	Mfg. No.	U/M
<b>73379</b>	Navy	9400BR	Ea
<b>73380</b>	Wine	9400BR	Ea

**Virco 9700 Series Chair/Desk Combination**

20"x25" writing surface with a 12" tablet arm. Oak top with a navy seat. 1-1/8" tubular steel frame with a bookrack. The seat height is 18". Virco, No Substitute.



KCDA No.	Mfg. No.	U/M
<b>77744</b>	9700BR	Ea

**Chair/Desk Combination**

18"x24" work surface, sand top. Hard plastic seat, chrome frame. Seat height measures 17-1/2". Available with or without book rack. Qualifying Standard: Scholarcraft.



KCDA No.	Description	Color	U/M
<b>72546</b>	With Book Rack	Blue	Ea
<b>72548</b>	With Book Rack	Cranberry	Ea
<b>72547</b>	With Book Rack	Sand	Ea
<b>72545</b>	No Book Rack	Cranberry	Ea
<b>72544</b>	No Book Rack	Sand	Ea

**DORM ROOM FURNITURE**

**Dorm Room Chair**

This chair is 30" high, is armless, the seat and back are upholstered in land/slate color fabric and the frame is chrome. KLN Manufacturing, No Substitute.



KCDA No.	Mfg. No.	U/M
<b>71111</b>	TFUSCB-TV	Ea

**Dorm Room Rocking Chair**

This chair has a solid oak frame and is upholstered in polyolefin Sherpa royal fabric. It has 2 positions and rocks. KLN Manufacturing, No Substitute.



KCDA No.	U/M
<b>71113</b>	Ea

**Dorm Room Desk**

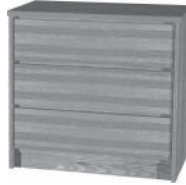
This is a 3 drawer pedestal desk with a center pencil drawer. The finish is quartered oak laminate and the frame is black powder coated. 42" wide x 22" deep x 30" high. KLN Manufacturing, No Substitute.



KCDA No.	Mfg. No.	U/M
<b>71112</b>	G20422230-PE	.....Ea

**Dorm Room Dresser**

High pressure oak laminate finish. Metal corner blocks with heavy duty nylon floor glides. 3 drawers, 30" wide x 19" deep x 30" high. KLN Manufacturing, No Substitute.



KCDA No.	Mfg. No.	U/M
<b>71115</b>	203	.....Ea

**Dorm Room Nightstand**

High pressure oak laminate finish, 3MM PVC edge banding. 3 drawers, 23" wide x 19" deep x 27" high. KLN Manufacturing, No Substitute.



KCDA No.	Mfg. No.	U/M
<b>71116</b>	210	.....Ea

**GUEST AND RECEPTION FURNITURE**

**Hon Guest Chairs**

Sled base with arms, black frame. These chairs are 29" deep x 27-1/2" wide x 34" high. Hon, No Substitute.



KCDA No.	Fabric	Mfg. No.	U/M
<b>70927</b>	Confetti Black	H2073	.....Ea
<b>70925</b>	Confetti Blue	H2073	.....Ea
<b>70926</b>	Confetti Burgundy	H2073	.....Ea

**Hon Metal Chair with Arms**

Guest, sled base chair with arms, seat width is 20"x 17-3/4" deep, chair overall height is 32-1/4". This chair matches the style of the Hon 6000 series executive chair. Hon, No Substitute.



KCDA No.	Fabric/Frame	Mfg. No.	U/M
<b>70979</b>	Cerulean/Black	6008 CU 90	.....Ea

**Versteel Guest Chair, Armless**

This chair has been designed to move with your body in a natural manner without any mechanisms. The seat shell is made of polypropylene resin and the sled base is steel. Versteel, No Substitute.

Chair Dimensions:

- Overall Height: 31-3/7", Width: 22-1/4", Depth: 21"
- Seat Height: 17-1/2", Width: 18-1/2", Depth: 18"
- Chair Weight: 12 Lbs



KCDA No.	Frame	Seat	U/M
<b>74353</b>	Chrome	Slate Blue	.....Ea

**Hon Park Avenue Chairs**

The Park Avenue collection was designed with comfort and style in mind which include thick seam sewn cushions and solid wood arms. These chairs measure 22" deep x 23-1/2" wide x 33-5/8" high. Hon, No Substitute.



KCDA No.	Fabric/Frame	Mfg. No.	U/M
<b>70928</b>	Dark Blue/Harvest	H5003.C.AB90	.....Ea
<b>70930</b>	Burgundy/Harvest	H5003.C.AB62	.....Ea
<b>70929</b>	Dark Gray/Harvest	H5003.C.AB12	.....Ea

**Hon Wood Chairs with Arms**

Wood oak frame, sled base with arms. Overall size 24-1/4" deep x 21-3/8" wide x 31-3/4" high. Hon, No Substitute.



KCDA No.	Fabric	Mfg. No.	U/M
<b>71929</b>	Blue	374MBB90	.....Ea

**Hon Wood Chairs with Arms**

Sled base with harvest hardwood arms and frame. fully upholstered with grade 3 fabric. Hon, No Substitute.



KCDA No.	Fabric	Mfg. No.	U/M
<b>71481</b>	Black, Confetti	2403.C.B10	.....Ea
<b>71912</b>	Blue, Confetti	H2403.C.AB.90	.....Ea
<b>71917</b>	Centurion Cerulean	H2403.C.CU.90	.....Ea
<b>71913</b>	Burgundy, Confetti	H2403.C.AB.62	.....Ea

**OFS Willow Lounge Chair**

Fully upholstered lounge chair with exposed hardwood legs, welt trim, and sinuous springs in seat and back. The dimensions for this chair are 37.5" wide x 30.75" deep, 31.5" high, 8.25" arm height. 19" seat height, 20" seat depth and 22" seat width. The Fabric is grade 1 Momentum Axis, Denim with Crescent Cherry wood leg finish. OFS, No Substitute.



KCDA No.	Mfg. No.	U/M
<b>72161</b>	4051	.....Ea

**Ideon Composium Sharp Lounge Chair**

This chair features a square back, full valance and square black legs. Fully upholstered with grade c pebbles atlantic fabric. 31" wide x 28" deep x 34" high x 22" seat width x 19.5 seat height. Ideon, No Substitute.



KCDA No.	Mfg. No.	U/M
<b>72164</b>	CPS-111-F1	.....Ea

**Lucy Lounge Chair**

Armless, 30" deep x 24" wide x 30" high with the seat height at 18". The fabric is grade 1, momentum context lake and the wood finish is medium oak. RT London, No Substitute.



KCDA No.	Mfg. No.	U/M
<b>71222</b>	LULB1A24	.....Ea

**Lucy Lu Stool**

18" deep x 18" wide x 17" high, momentum context lake fabric, metal legs. RT London, No Substitute.

KCDA No. Mfg. No. U/M  
**71224** ..... LULU18 ..... Ea



**Ideon Composium Ottoman**

This ottoman is fully upholstered with valance and square black legs, the fabric is grade c pebbles atlantic. 22" wide x 22" deep x 17.5" high. Ideon, No Substitute.

KCDA No. Mfg. No. U/M  
**72166** ..... CPZ-101-F1 ..... Ea



**Arcadia Serafina Bench**

Sofa bench fully upholstered with silver metal legs. Grade 1 fabric, Bristol tate. This bench measures 66" wide x 22" deep x 18" high. Arcadia, No Substitute.

KCDA No. Mfg. No. U/M  
**72170** ..... 7466 ..... Ea



**Mission Style Lounge Sofas**

Three seat sofas measure 75-1/2" wide x 28" deep x 32" high. Cushioned and upholstered seat and back. Mission style wood slats on the side. Qualifying Standard: Corriander.

KCDA No. Frame Fabric U/M  
**73325** ..... Cherry, Medium ..... Aubergine ..... Ea  
**73319** ..... Oak ..... Ocean Blue ..... Ea  
**73350** ..... Maple, Natural ..... Pewter ..... Ea



**Stella Series Reception Furniture**

Black leather fully upholstered seat and back with panel arms. Diversification, No Substitute.

KCDA No. Description Mfg. No. U/M  
**72123** ..... Chair, 33"wx30"dx32"h ..... Stella 1 ..... Ea  
**72122** ..... Settee, (2seat) 56"wx30"dx32"h ..... Stella 2 ..... Ea  
**72121** ..... Sofa, (3 seat) 82"wx30"dx32"h ..... Stella 3 ..... Ea



**Virco End Table**

This table features a wood sled base finished in medium oak and the measurements are 22-1/2" long x 27" wide x 19-1/2" high. Virco, No Substitute.

KCDA No. Mfg. No. U/M  
**73355** ..... LGT2327 ..... Ea



**Virco Coffee Table**

This table features a wood sled base finished in medium oak and the measurements are 52" long x 24" wide x 29" 16 high. Virco, No Substitute.

KCDA No. Mfg. No. U/M  
**73357** ..... LGT5224 ..... Ea



**Lucy End Table**

Natural maple veneer finish with metal legs, 24" deep x 42" wide x 16" high. RT London, No Substitute.

KCDA No. Mfg. No. U/M  
**71228** ..... LUTBC4224 ..... EA



**LECTERNS**

**Deluxe Table Top Lectern**

20" wide x 18" deep x 10-1/4" high at front 13" high at back, black finish. Qualifying Standard: Smith Systems.

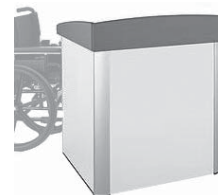
KCDA No. U/M  
**73532** ..... Ea



**Egan ADA Lectern**

This mobile lectern accommodates wheel chair access with push button electrical height adjustment from 34 to 44" high - inside clearance dimensions. Aluminum extrusion frame with a PVC toe kick. Includes lower cabinet with lock and adjustable shelf. 1-3/4" i.d. grommets on both sides and top of worksurface for cord management. Etex crown and lower sections. Includes a 12" goose neck lamp with dimmer switch. Charcoal Etex finish. Egan, No Substitute.

KCDA No. Mfg. No. U/M  
**72143** ..... S2LH.B.T.CL ..... Ea



**Egan Lectern**

Aluminum extrusion frame PVC toe kick, 2 casters on presenters side. Lower cabinet with lock and adjustable shelf. 1-3/4" i.d. grommets on both sides and top of worksurface for cord management - etex crown and lower sections. Includes a 12" goose neck lamp with dimmer switch. Charcoal Etex finish. Egan, No Substitute.

KCDA No. Mfg. No. U/M  
**72137** ..... S2LF.B.T.CL ..... Ea



**Deluxe Lectern**

This lectern measures 25" wide x 17" deep x 44" high. The top is made with 45 pound density particle board, it has three shelves and four - 3" casters, two with brakes. The frame is black, the top is pewter mesh color and the T-mold is Persian blue. Qualifying Standard: Smith

KCDA No. U/M  
**73528** ..... Ea



Furniture



Please visit our website [www.kcda.org](http://www.kcda.org) for current prices on all products listed in the KCDA Reference Guide.

**Inspiration Lectern**

This lectern is compact and can support professional presentations in small spaces. It can be used in a seated or standing position with full access to both sides of the lectern, and includes a locking audience side door. Ventilation provides "chimney effect" airflow, keeping your equipment cool and includes a cord management system throughout. The 5" locking balloon wheels roll easily and quietly. 24" wide x 28" deep x 36-5/8" high. Fusion maple top, black frame. Spectrum, No Substitute.



KCDA No.	Mfg. No.	U/M
<b>71105</b>	55400-36-BW-FMB	.....Ea

**Overhead Projector Lectern Cart**

Side storage bin, four - 3" casters, two with brakes, 18"x20" lectern can be positioned on left or right of base, will accommodate 16"x18" projector area with rubber mat. 30" wide x 18" deep x 42" high at front. Qualifying Standard: Smith Systems.



KCDA No.	Top/Frame	U/M
<b>73522</b>	Black/Black	.....Ea
<b>73523</b>	Black/Champagne	.....Ea

**NURSES COTS**

**First Aid Cot**

This first aid cot is upholstered in anti-bacterial, bleach cleanable heavy duty vinyl and has high density foam for comfort. It measures 72"x26"x22.25" and has a detachable pillow. The frame is made with 14 gauge tubular steel with a cross brace to support the entire circumference of the couch. The core is made with 5/8" medium density 45lbs. industrial grade particleboard. Qualifying Standard: USA Capitol.



• For Paper dispenser see KCDA No. 52247.

KCDA No.	U/M
<b>52243</b>	.....Ea

**Nurses Cot**

Recovery cot with 2" firm foam padding, 1" thick solid plywood frame construction. Stain resistant, woven, knit backed vinyl upholstery. Chrome legs, holds up to 250 pounds. These cots measures 72" long x 18" high x 27" wide and the paper dispenser is included and uses paper 18" to 21" wide. Qualifying Standard: Clinton Industries.



KCDA No.	Color	U/M
<b>52238</b>	Purple Gray	.....Ea
<b>52248</b>	Royal Blue	.....Ea

**Nurses Cot Paper Dispenser**

Paper dispenser for nurses cot. Dispenses paper on a removeable metal rod with 2 stainless steel spring action brackets. Will accommodate paper rolls up to 21" wide. Qualifying Standard: USA Capitol.



• Fits Nurses Cot KCDA No. 52243.

KCDA No.	U/M
<b>52247</b>	.....Ea

**RACKS, COAT**

**Coat Rack**

Solid hardwood construction, 5-step hand rubbed finish. Qualifying Standard: Lesro Industries.



KCDA No.	U/M
<b>71384</b>	.....Ea

**TABLE BOOK BOXES / TOTE TRAYS**

**Virco 400 Series Tote Trays and Runners**

12" wide x 16" deep x 4" high tote trays provide convenient storage space for a variety of items. They're constructed of high-impact plastic and can be mounted beneath the work surface with metal runners (Included). Virco, No Substitute.



KCDA No.	Mfg. No.	U/M
<b>74564</b>	UTOTE	.....Ea

**Virco 4000 Series Book Box**

Plastic with open front measures 15" wide x 14" deep x 4-1/2" high. Charcoal black finish, use with Virco 4000 Series tables. Virco, No Substitute.



KCDA No.	Mfg. No.	U/M
<b>53626</b>	UBOOK	.....Ea

**TABLE CADDIES**

**Mity-Lite Table Cart**

Each cart holds up to 10 tables. Mity-Lite, No Substitute.

- 70136 holds tables KCDA No. 70134 only.
- 70137 holds tables KCDA No. 70135 only.



KCDA No.	Mfg. No.	U/M
<b>70136</b>	CRT3096FBLK2	.....Ea
<b>70137</b>	CRT3072FBLK2	.....Ea

**Virco Table Caddies**

HTT6 and HTT8 table trucks help you transport rectangular Virco folding tables. Model HTT6 holds up to 16 traditional or 12 Core-a-Gator® 72" tables, while model HTT8 accommodates up to 16 traditional or 12 Core-a-Gator 96" tables. The HRTT1 moves and stores Virco's round and oval folding tables. It accommodates up to 10 traditional or seven Core-a-Gator models. Virco, No Substitute.



71829 & 71830



71831

KCDA No.	Description	Mfg. No.	U/M
<b>71829</b>	For 72" Tables	HTT6	.....Ea
<b>71830</b>	For 96" Tables	HTT8	.....Ea
<b>71831</b>	For Round Tables	HRTT1	.....Ea



**TABLE CASTERS**

**Virco Table Caster Set**

Four 3" diameter casters give tables easy mobility. Casters add 4" to table height. Casters work with Virco's Future Access and 8700 Series tables. Virco, No Substitute.



KCDA No.	Mfg. No.	U/M
<b>73568</b>	U87CAST	Set

**TABLE LEGS**

**Virco 4000 Series Table Legs**

Standard legs, adjustable from 22" to 30" in one-inch increments. Char black upper with chrome finish on the lower part of the leg. 4 legs per set. Virco, No Substitute.



KCDA No.	Mfg. No.	U/M
<b>74000</b>	480LEG	1/Set

**TABLES / ADJUSTABLE**

**McDowell-Craig Adjustable Tables**

These factory assembled welded frame tables are constructed with a 1"x2" apron fully welded to 1-3/4" round legs with adjustable glides. Standard height is 29". Tops are constructed using industrial grade 1" thick particle board, high pressure laminate, gum resistant backer sheet, and glued T-band edge. Standard frame and edge color is black. McDowell-Craig offers a wide variety of sizes and colors, contact KCDA for other options. McDowell-Craig, No Substitute.



KCDA No.	Shape	Size	Color	Mfg. No.	U/M
<b>70122</b>	.....Rectangle	72"x36"	.....Grey Nebula	AV7236GN	.....Ea
<b>70123</b>	.....Rectangle	72"x36"	.....Fusion Maple	AV7236FM	.....Ea
<b>70128</b>	.....Round	42"	.....Grey Nebula	AV42GN	.....Ea
<b>70129</b>	.....Round	42"	.....Fusion Maple	AV42FM	.....Ea

**MultiTables**

Extra strong hardwood plywood tabletop is laminated on both sides for warp resistance. The aluminum core in each leg adds stability and strength. Save space by moving tables to the side of the room and stacking them in a rotational pattern. Low legs adjust from 12" to 16". Medium legs adjust from 16" to 24". Community Playthings, No Substitute.



KCDA No.	Description	Mfg. No.	U/M
<b>77790</b>	.....Rectangular 22"x44", Low Legs	A914	.....Ea
<b>77791</b>	.....Round 36", Low Legs	A938	.....Ea
<b>99988</b>	.....Round 36", Medium Legs	A939	.....Ea
<b>77788</b>	.....Square 30"x30", Low Legs	A958	.....Ea



Please visit our website [www.kcda.org](http://www.kcda.org) for current prices on all products listed in the KCDA Reference Guide.

**Artco Bell Adjustable Tables**

45 pound density particle board with high pressure plastic laminate surface, black uppers, chrome lowers, adjusts 22" to 29" in 1" increments. Artco Bell, No Substitute.



KCDA No.	Size	Finish	Mfg. No.	U/M
<i>Flower Shaped Table</i>				
<b>74033</b>	.....60"	Nepal Teak	128F-72	.....Ea
<i>Kidney Shaped Tables</i>				
<b>73824</b>	.....48"x72"	Grey Glace	1275-18	.....Ea
<b>74086</b>	.....48"x72"	Nepal Teak	1275-72	.....Ea
<b>73847</b>	.....48"x72"	Oak, Bannister	1275-8	.....Ea
<i>Rectangular Shaped Tables</i>				
<b>73817</b>	.....24"x48"	Grey Glace	1210-18	.....Ea
<b>74082</b>	.....24"x48"	Nepal Teak	1210-72	.....Ea
<b>73840</b>	.....24"x48"	Oak, Bannister	1210-8	.....Ea
<b>73818</b>	.....30"x48"	Grey Glace	1220-18	.....Ea
<b>74010</b>	.....30"x48"	Nepal Teak	1220-72	.....Ea
<b>73841</b>	.....30"x48"	Oak, Bannister	1220-8	.....Ea
<b>73820</b>	.....30"x60"	Grey Glace	1230-18	.....Ea
<b>74011</b>	.....30"x60"	Nepal Teak	1230-72	.....Ea
<b>73843</b>	.....30"x60"	Oak, Bannister	1230-8	.....Ea
<b>73822</b>	.....30"x72"	Grey Glace	1250-18	.....Ea
<b>74014</b>	.....30"x72"	Nepal Teak	1250-72	.....Ea
<b>73845</b>	.....30"x72"	Oak, Bannister	1250-8	.....Ea
<b>73821</b>	.....36"x60"	Grey Glace	1240-18	.....Ea
<b>74012</b>	.....36"x60"	Nepal Teak	1240-72	.....Ea
<b>73844</b>	.....36"x60"	Oak, Bannister	1240-8	.....Ea
<b>73823</b>	.....36"x72"	Grey Glace	1260-18	.....Ea
<b>74016</b>	.....36"x72"	Nepal Teak	1260-72	.....Ea
<b>73846</b>	.....36"x72"	Oak, Bannister	1260-8	.....Ea
<b>73830</b>	.....42"x60"	Grey Glace	1270-18	.....Ea
<i>Round Shaped Tables</i>				
<b>74029</b>	.....36"	Nepal Teak	1282-72	.....Ea
<b>73850</b>	.....36"	Oak, Bannister	1282-8	.....Ea
<b>73826</b>	.....42"	Grey Glace	1281-18	.....Ea
<b>74025</b>	.....42"	Nepal Teak	1281-72	.....Ea
<b>73849</b>	.....42"	Oak, Bannister	1281-8	.....Ea
<b>73825</b>	.....48"	Grey Glace	1280-18	.....Ea
<b>74017</b>	.....48"	Round	1280-72	.....Ea
<b>73848</b>	.....48"	Oak, Bannister	1280-8	.....Ea
<b>73827</b>	.....60"	Grey Glace	1286-18	.....Ea
<i>Square Shaped Tables</i>				
<b>74087</b>	.....36"x36"	Nepal Teak	1205-72	.....Ea
<b>74138</b>	.....36"x36"	Oak, Bannister	1205-8	.....Ea
<b>74139</b>	.....42"x42"	Oak, Bannister	1215-8	.....Ea
<b>73819</b>	.....48"x48"	Grey Glace	1225-18	.....Ea
<b>73842</b>	.....48"x48"	Oak, Bannister	1225-8	.....Ea
<i>Trapezoid Shaped Tables</i>				
<b>73829</b>	.....24"x24"x24"x48"	Grey Glace	1291-18	.....Ea
<b>74031</b>	.....24"x24"x24"x48"	Nepal Teak	1291-72	.....Ea
<b>73852</b>	.....24"x24"x24"x48"	Oak, Bannister	1291-8	.....Ea
<b>73828</b>	.....30"x30"x30"x60"	Grey Glace	1290-18	.....Ea
<b>74030</b>	.....30"x30"x30"x60"	Nepal Teak	1290-72	.....Ea
<b>73851</b>	.....30"x30"x30"x60"	Oak, Bannister	1290-8	.....Ea

**Virco 4000 Series Adjustable Tables**

Laminated top, black vinyl bumper edge, charcoal uppers, with chrome lowers. Adjusts 22-30" in 1" increments. Virco, No Substitute.

- To add book boxes see KCDA No. 53626
- To add tote trays see KCDA No. 74564.



KCDA No.	Size	Finish	Mfg. No.	U/M
<b>Horseshoe Shaped Tables</b>				
74877	60"x66"	Grey Nebula	48HORSE60	Ea
74303	60"x66"	Oak	48HORSE60	Ea
74302	60"x66"	Walnut	48HORSE60	Ea
<b>Kidney Shaped Tables</b>				
74876	72"	Grey Nebula	48KID72	Ea
74301	72"	Oak	48KID72	Ea
74300	72"	Walnut	48KID72	Ea
<b>Rectangular Shaped Tables</b>				
74860	24"x36"	Grey Nebula	482436	Ea
74044	24"x36"	Oak	482436	Ea
74043	24"x36"	Walnut	482436	Ea
74861	24"x48"	Grey Nebula	482448	Ea
74046	24"x48"	Oak	482448	Ea
74045	24"x48"	Walnut	482448	Ea
74862	24"x60"	Grey Nebula	482460	Ea
74048	24"x60"	Oak	482460	Ea
74047	24"x60"	Walnut	482460	Ea
74863	30"x36"	Grey Nebula	483036	Ea
74058	30"x36"	Oak	483036	Ea
74864	30"x48"	Grey Nebula	483048	Ea
74051	30"x48"	Oak	483048	Ea
74050	30"x48"	Walnut	483048	Ea
74865	30"x60"	Grey Nebula	483060	Ea
74064	30"x60"	Oak	483060	Ea
74063	30"x60"	Walnut	483060	Ea
74866	30"x72"	Grey Nebula	483072	Ea
74053	30"x72"	Oak	483072	Ea
74052	30"x72"	Walnut	483072	Ea
74868	36"x60"	Grey Nebula	483660	Ea
74289	36"x60"	Oak	483660	Ea
74288	36"x60"	Walnut	483660	Ea
74869	36"x72"	Grey Nebula	483672	Ea
74056	36"x72"	Oak	483672	Ea
74055	36"x72"	Walnut	483672	Ea
<b>Square Shaped Tables</b>				
74867	36"x36"	Grey Nebula	483636	Ea
74066	36"x36"	Oak	483636	Ea
74065	36"x36"	Walnut	483636	Ea
<b>Round Shaped Tables</b>				
74870	36"	Grey Nebula	4836R	Ea
74291	36"	Oak	4836R	Ea
74290	36"	Walnut	4836R	Ea
74871	42"	Grey Nebula	4842R	Ea
74293	42"	Oak	4842R	Ea
74292	42"	Walnut	4842R	Ea
74872	48"	Grey Nebula	4848R	Ea
74061	48"	Oak	4848R	Ea
74060	48"	Walnut	4848R	Ea

**Virco 4000 Series Adjustable Tables, Continued**

KCDA No.	Size	Finish	Mfg. No.	U/M
74873	60"	Grey Nebula	4860R	Ea
74295	60"	Oak	4860R	Ea
74294	60"	Walnut	4860R	Ea
<b>Trapezoid Shaped Tables</b>				
74874	24"x24"x24"x48"	Grey Nebula	48TRAP48	Ea
74297	24"x24"x24"x48"	Oak	48TRAP48	Ea
74296	24"x24"x24"x48"	Walnut	48TRAP48	Ea
74875	30"x30"x30"x60"	Grey Nebula	48TRAP60	Ea
74299	30"x30"x30"x60"	Oak	48TRAP60	Ea
74298	30"x30"x30"x60"	Walnut	48TRAP60	Ea
74878	30"x30"x30"x84"	Grey Nebula	48TRAP60	Ea
70405	42"x42"x42"x84"	Oak	48TRAP84	Ea
70406	42"x42"x42"x84"	Walnut	48TRAP84	Ea

**Multipurpose Tables**

Selected veneer plywood core 1-1/8" thick sealed with a laminate backer sheet for balanced construction. Decorative high pressure laminate surface. Factory installed leg mounting plate tapered table legs adjust in 1" increments, chrome finish legs, adjusts 21" to 29". Qualifying Standard: Allied.



KCDA No.	Description	Finish	U/M
<b>Kidney Shaped Table</b>			
74040	48"x72"	Walnut	Ea
<b>Rectangular Shaped Tables</b>			
73912	24"x48"	Golden Oak	Ea
73910	24"x48"	Walnut	Ea
73917	30"x48"	Golden Oak	Ea
73922	30"x60"	Golden Oak	Ea
73927	30"x72"	Golden Oak	Ea
73925	30"x72"	Walnut	Ea
73933	36"x60"	Golden Oak	Ea
73930	36"x60"	Walnut	Ea
73937	36"x72"	Golden Oak	Ea
73935	36"x72"	Walnut	Ea
<b>Round Shaped Tables</b>			
73972	48"	Golden Oak	Ea
73970	48"	Walnut	Ea
<b>Trapezoid Shaped Tables</b>			
73990	24"x24"x24"x48"	Golden Oak	Ea
73980	24"x24"x24"x48"	Walnut	Ea
73995	30"x30"x30"x60"	Golden Oak	Ea
73985	30"x30"x30"x60"	Walnut	Ea

**\* Don't See What You Need Here?**  
We can source it for you.

Contact KCDA customer service with the details at [customerservice@kcda.org](mailto:customerservice@kcda.org) or 800-422-5019.

Furniture

**Virco 4000 Series Primary Tables**

Laminated tops, black vinyl bumper edge, chrome lowers, charcoal uppers, legs adjust from 17" to 25" in 1" increments. Virco, No Substitute.



KCDA No.	Size	Finish	Mfg. No.	U/M
----------	------	--------	----------	-----

**Horseshoe Shaped Tables**

<b>74897</b>	60"x66"	Grey Nebula	48HORSE60LO	Ea
<b>70280</b>	60"x66"	Oak	48HORSE60LO	Ea
<b>70279</b>	60"x66"	Walnut	48HORSE60LO	Ea

**Kidney Shaped Tables**

<b>74896</b>	48"x72"	Grey Nebula	48KID72LO	Ea
<b>70278</b>	48"x72"	Oak	48KID72LO	Ea
<b>70277</b>	48"x72"	Walnut	48KID72LO	Ea

**Rectangular Shaped Tables**

<b>74880</b>	24"x36"	Grey Nebula	482436LO	Ea
<b>70246</b>	24"x36"	Oak	482436LO	Ea
<b>74881</b>	24"x48"	Gey Nebula	482448LO	Ea
<b>70248</b>	24"x48"	Oak	482448LO	Ea
<b>74882</b>	24"x60"	Grey Nebula	482460LO	Ea
<b>70250</b>	24"x60"	Oak	482460LO	Ea
<b>74883</b>	30"x36"	Grey Nebula	483036LO	Ea
<b>74884</b>	30"x48"	Grey Nebula	483048LO	Ea
<b>70254</b>	30"x48"	Oak	483048LO	Ea
<b>74885</b>	30"x60"	Grey Nebula	483060LO	Ea
<b>70256</b>	30"x60"	Oak	483060LO	Ea
<b>70255</b>	30"x60"	Walnut	483060LO	Ea
<b>74886</b>	30"x72"	Grey Nebula	483072LO	Ea
<b>70258</b>	30"x72"	Oak	483072LO	Ea
<b>74888</b>	36"x60"	Grey Nebula	483660LO	Ea
<b>70262</b>	36"x60"	Oak	483660LO	Ea
<b>74889</b>	36"x72"	Grey Nebula	483672LO	Ea
<b>74899</b>	36"x72"	Oak	483672LO	Ea
<b>70263</b>	36"x72"	Walnut	483672LO	Ea

**Round Shaped Tables**

<b>74890</b>	36"	Grey Nebula	4836RLO	Ea
<b>70266</b>	36"	Oak	4836RLO	Ea
<b>74891</b>	42"	Grey Nebula	4842RLO	Ea
<b>70268</b>	42"	Oak	4842RLO	Ea
<b>74892</b>	48"	Grey Nebula	4848RLO	Ea
<b>70270</b>	48"	Oak	4848RLO	Ea
<b>70269</b>	48"	Walnut	4848RLO	Ea
<b>74893</b>	60"	Grey Nebula	4860RLO	Ea
<b>70272</b>	60"	Oak	4860RLO	Ea
<b>70271</b>	60"	Walnut	4860RLO	Ea

**Square Shaped Tables**

<b>74887</b>	36"x36"	Grey Nebula	483636LO	Ea
<b>70260</b>	36"x36"	Oak	483636LO	Ea
<b>70259</b>	36"x36"	Walnut	483636LO	Ea

**Trapezoid Shaped Tables**

<b>74894</b>	24"x24"x24"x48"	Grey Nebula	48TRAP48LO	Ea
<b>74895</b>	24"x24"x24"x60"	Grey Nebula	48TRAP60LO	Ea
<b>70276</b>	24"x24"x24"x60"	Oak	48TRAP60LO	Ea
<b>74898</b>	24"x24"x24"x84"	Grey Nebula	48TRAP84LO	Ea
<b>70401</b>	24"x24"x24"x84"	Walnut	48TRAP84LO	Ea

**TABLES / CAFETERIA**

**AmTab Mobile Cafeteria Bench Table**

This mobile folding table uses an EZ-Auto locking system capable of locking the table automatically for the storage position. The measurements are 12' long x 30" wide. Included are 4" casters. The laminate is nepal teak, the frame and edging are black. AmTab, No Substitute.



KCDA No.	Color	Frame	Mfg. No.	U/M
<b>73671</b>	Nepal Teak	Black	MBT12	Ea

**Cafeteria Table**

Mobile rectangular folding cafeteria table with bench seating. Features oak laminate top with black frame and vinyl T molding. Table measures 12' long x 30" wide x 29" high. Qualifying Standard: Midwest.



KCDA No.	U/M
<b>74581</b>	Ea

**Cafeteria Tables**

Laminated top, chrome frame. These tables measure 12' long and the table top is 30" wide x 29" high. The bench seat is 17" high x 9" deep. Black banding edge. Qualifying Standard: Sico.



KCDA No.	Finish	U/M
<b>74172</b>	Blue Brittany	Ea
<b>74174</b>	Grey Nebula	Ea
<b>74170</b>	Oak, Bannister	Ea
<b>74171</b>	Teak	Ea

**Cafeteria Tables**

These tables measure 30" wide x 12' long, height adjusts from 27" to 29", it folds with bench seats. The seating capacity is 16, and the frame and legs are black. Folded height is 78" tall. Qualifying Standard: Palmer Hamilton.



KCDA No.	Top	U/M
<b>74127</b>	Brittany Blue	Ea
<b>74129</b>	Grey Glace	Ea
<b>74134</b>	Mauve Nebula	Ea
<b>74132</b>	Oak, Golden	Ea
<b>74131</b>	Montana Walnut, Matte Finish	Ea
<b>74130</b>	Organic Cotton	Ea



Please visit our website [www.kcda.org](http://www.kcda.org) for current prices on all products listed in the KCDA Reference Guide.

**Virco Cafeteria Tables**

Mobile cafeteria tables with attached bench seating. Virco, No Substitute.

**KCDA Nos. 74911 & 74912**

- Recommended for Grades 1 through 5.  
 Seat Height 15"  
 Table Top Height 27"  
 Table Top Width 30"  
 Table Length is 144"  
 Total Width 53"



**KCDA Nos. 74913 & 74914**

- Recommended for Grades 6 through Adult.  
 Seat Height 17"  
 Table Top Height 29"  
 Table Top Width 30"  
 Table Length is 144"  
 Total Width 53"



KCDA No.	Size	Top	Mfg. No.	U/M
74912	15"x27"	Grey Nebula	MTB152712	Ea
74911	15"x27"	Medium Oak	MTB152712	Ea
74914	17"x29"	Grey Nebula	MTB172912	Ea
74913	17"x29"	Medium Oak	MTB172912	Ea

**Virco Bench Table**

T-molding edge. 8' long adjusts 27-29", bench adjust 15-17". Virco's convertible bench table brings a new dimension of convenience to multi-purpose facilities. Because it can function as either a bench or table, the MTC8 readily accommodates a range of functions. For ganging devise contact KCDA. Virco, No Substitute.



KCDA No.	Finish	Mfg. No.	U/M
74902	Grey Nebula	MTC8	Ea
74900	Medium Oak	MTC8	Ea

**Oval Cafeteria Tables**

Folding, oval chrome frame, black stools. Mobile, 61" x 72" diameter x 29" high. Provides comfortable seating for 10 adults, larger students or athletes. Easy for a single person to fold and move through a standard doorway. Folding system has three torsion bars, the most on any round table. Table tracks in straight line because of its six casters. 14 gauge steel frame. Upright folded height is 54-1/2". Qualifying Standard: BioFit.



KCDA No.	Finish	U/M
74591	Bannister Oak	Ea
74593	Grey Nebula	Ea

**Round Cafeteria Tables**

29" high, folding, mobile. Qualifying Standard: Palmer Hamilton.



KCDA No.	Top/Frame	Diameter	U/M
74592	Montana Walnut/Black	48"	Ea
74604	Organic Cotton/Black	48"	Ea
74601	Oak, Golden/Chrome	60"	Ea
74602	Montana Walnut/Black	60"	Ea
74603	Organic Cotton/Black	60"	Ea

**Virco Cafeteria Table Tops**

1-1/8" high-pressure laminate cafeteria table tops feature a particleboard core. Each table top has a protective T-mold banding, as well as a backing sheet to help prevent warping. The underside of each top has two pilot holes to facilitate the attachment of Virco bases. Virco, No Substitute.



- For table bases see KCDA Nos. 70537, 70538 and 70539.

KCDA No.	Finish	Size	Mfg. No.	U/M
70535	Medium Oak	36"	U36R	Ea
70536	Walnut	36"	U36R	Ea
70540	Medium Oak	42"	U42R	Ea
70541	Walnut	42"	U42R	Ea
70545	Medium Oak	48"	U48R	Ea
70546	Walnut	48"	U48R	Ea

**Virco Cafeteria Table Bases**

Chrome finish, 29" high, sturdy die-cast aluminum foot construction. Heavy gauge steel column locks securely into its upper foot to eliminate top rotation. ABS glides adjust in a 1/2" range to help level bases on uneven floors. Easy assembly. 29" base will accept top sizes 30" to 36", 33" base will accept top sizes 36" to 42" and 40" base will accept top sizes 42" to 48" diameter. Virco, No Substitute.



- For cafeteria table tops see KCDA Nos. 70535, 70536, 70540, 70541, 70545 and 70546.

KCDA No.	Description	Mfg. No.	U/M
70537	29" Diameter Base	66129	Ea
70538	33" Diameter Base	66133	Ea
70539	40" Diameter Base	66140	Ea

**TABLES / CONFERENCE**

**Conference Table**

Boat shaped with TT performance base, wood bullnose edge. The table measures 96" long is 30" wide on the ends and the center width is 42". This table has a laminate top in millwork cherry, the edge is MC Millwork and the base is ebony. Qualifying Standard: Versteel.



KCDA No.	U/M
74352	Ea

**Performance Conference Table**

Racetrack shaped table 94-1/4" wide by 43-1/4" deep. Honey laminate with matching PVC edge. Performance, No Substitute.



KCDA No.	Mfg. No.	U/M
71007	PL136	Ea

**Versteel Conference Table**

This meeting table measures 36" deep x 72" wide with a fixed top made with HPL laminate in a sugar maple color, the edge is 3MM PVC and is black. the frame is color is black and includes casters. Versteel, No Substitute.



KCDA No.	Mfg. No.	U/M
74335	TMR4-3672REFX	Ea

**TABLES / FOLDING**

**Artco Bell Adjustable Table**

The top is a solid core of 3/4" particle board. High-pressure laminated plastic surface of 3 core face plastic and backer sheet. The edge banding is black vinyl plastic of oval design with a smooth face. Adjustable: 22"-29" in 1" increments. The legs are reinforced with a 1", 18-gauge tube cross member not more than 9" from the top tubular member. 18-gauge chrome plated adjustable leg insert utilizing a plated locking adjustment bolt adjustment in 1" increments. Artco Bell, No Substitute.



KCDA No.	Mfg. No.	U/M
<b>78346</b>	1550	Ea

**Folding Tables**

These rectangular tables have a 5/8" high pressure laminate surface with a solid core heavy-duty understructure. The edges are vinyl "T" molding. The tables measure 29" tall and the legs are round and made of 16-gauge steel with 1" outside diameter. Spring-bolt brace mechanisms assure that these tables will stand up to years of constant use and handling. Qualifying Standards: Scholarcraft & Midwest Folding.



KCDA No.	Size	Finish Frame	U/M
<b>73859</b>	30"x72"	Oak, Light Black	Ea
<b>73862</b>	30"x72"	Walnut Brown	Ea
<b>73860</b>	30"x96"	Oak, Light Black	Ea
<b>73864</b>	30"x96"	Walnut Brown	Ea

**Mity-Lite Tables**

These folding tables are light weight, rectangular and made of high impact ABS plastic. The top shell is permanently bonded to an internal wood laminate core. The top laminate is speckled grey and the frame is black. Mity-Lite, No Substitute.



- 70134 uses cart KCDA No. 70136.
- 70135 uses cart KCDA No. 70137.

KCDA No.	Size	Mfg. No.	U/M
<b>70135</b>	30"d x 72"w x 29"h	RT-3072W	Ea
<b>70134</b>	30"d x 96"w x 29"h	RT-3096W	Ea

**Industructable Folding Tables**

Use for Heavy duty environments. 29" high with 1" round powder coated steel legs. Iceberg, No Substitute.

- KCDA Nos. 78351 and 78352 holds up to 600 pounds of evenly distributed weight.
- KCDA Nos. 78354 and 78353 holds up to 1200 pounds of evenly distributed weight.



KCDA No.	Color	Size	Mfg. No.	U/M
<b>78352</b>	Charcoal	24"x48"	65207	Ea
<b>78351</b>	Platinum	24"x48"	65203	Ea
<b>78353</b>	Charcoal	30"x60"	65217	Ea
<b>78354</b>	Platinum	30"x60"	65213	Ea

**Virco 6000 Series Folding Tables**

Rectangular 3/4" high density particleboard core with a thermofused melamine top surface. All top shapes and sizes are strengthened by a steel support apron and rounded safe edges. When the table is not in use, a spring clip locks table legs in folded position. Patented corner supports give the to surface added protection while stacking these tables are 29" high. Virco, No Substitute.



KCDA No.	Size	Description	Mfg. No.	U/M
<b>78331</b>	18"x60"	Grey Nebula	601860	Ea
<b>78330</b>	18"x60"	Medium Oak	601860	Ea
<b>78335</b>	18"x72"	Grey Nebula	601872	Ea
<b>78368</b>	18"x72"	Medium Oak	601872	Ea
<b>78332</b>	18"x96"	Grey Nebula	601896	Ea
<b>78369</b>	18"x96"	Medium Oak	601896	Ea
<b>78336</b>	24"x48"	Grey Nebula	602448	Ea
<b>78370</b>	24"x48"	Medium Oak	602448	Ea
<b>78337</b>	24"x60"	Grey Nebula	602460	Ea
<b>78371</b>	24"x60"	Medium Oak	602460	Ea
<b>78338</b>	24"x72"	Grey Nebula	602472	Ea
<b>78367</b>	24"x72"	Medium Oak	602472	Ea
<b>78339</b>	24"x96"	Grey Nebula	602496	Ea
<b>78372</b>	24"x96"	Medium Oak	602496	Ea
<b>78341</b>	30"x60"	Grey Nebula	603060	Ea
<b>07493</b>	30"x60"	Medium Oak	603060	Ea
<b>54041</b>	30"x72"	Grey Nebula	603072	Ea
<b>74969</b>	30"x72"	Medium Oak	603072	Ea
<b>78334</b>	30"x96"	Grey Nebula	603096	Ea
<b>78333</b>	30"x96"	Medium Oak	603096	Ea
<b>78340</b>	36"x96"	Grey Nebula	603696	Ea
<b>78373</b>	36"x96"	Medium Oak	603696	Ea
<b>78344</b>	36"x96"	Walnut	603696	Ea
<b>78375</b>	36"x72"	Medium Oak	603672	Ea
<b>78374</b>	36"x72"	Grey Nebula	603672	Ea
<b>09704</b>	36"x72"	Walnut	603672	Ea

**\* Don't See What You Need Here?**  
*We can source it for you.*

Contact KCDA customer service with the details at [customerservice@kcda.org](mailto:customerservice@kcda.org) or 800-422-5019.



Please visit our website [www.kcda.org](http://www.kcda.org) for current prices on all products listed in the KCDA Reference Guide.

**Virco Core-A-Gator Folding Tables**

The extruded aluminum frame makes it superior to lightweight tables that rely on wooden inserts for structural strength. The frame is far stronger than any wood and has better mechanical properties, it's more easily shaped into forms that match the contours of round tables. The frame delivers full perimeter reinforcement, enabling round shapes to perform as well or better than rectangular tables. ABS plastic tops, light weight locking folding legs, 29" high. Virco, No Substitute.



KCDA No.	Size	Color	Mfg. No.	U/M
74960	18"x72"	Graystone	611872	Ea
74947	18"x72"	Oyster	611872	Ea
74961	18"x96"	Graystone	611896	Ea
74948	18"x96"	Oyster	611896	Ea
74962	24"x72"	Graystone	612472	Ea
74949	24"x72"	Oyster	612472	Ea
74964	30"x60"	Graystone	613060	Ea
74951	30"x60"	Oyster	613060	Ea
74965	30"x72"	Graystone	613072	Ea
74952	30"x72"	Oyster	613072	Ea
74966	30"x96"	Graystone	613096	Ea
74953	30"x96"	Oyster	613096	Ea
74967	36"x72"	Graystone	613672	Ea
74954	36"x72"	Oyster	613672	Ea
74968	36"x96"	Graystone	613696	Ea
74955	36"x96"	Oyster	613696	Ea
74970	60" Round	Graystone	6160R	Ea
74957	60" Round	Oyster	6160R	Ea
74971	66" Round	Graystone	6166R	Ea
74958	66" Round	Oyster	6166R	Ea
74972	72" Round	Graystone	6172R	Ea
74959	72" Round	Oyster	6172R	Ea

**TABLES / OFFICE**

**Hon UTM Office Tables**

Metal frame with high pressure laminate top, square chrome legs, adjustable leveling glides. Hon, No Substitute.



KCDA No.	Size	Laminate	Mfg. No.	U/M
74114	60"x30"	Harvest	UTM3060.C.CHR	Ea
74115	72"x36"	Harvest	UTM3672.C.P.CHR	Ea
74116	72"x36"	Columbian Walnut	UTM3672ZP	Ea

**Lobo Table**

Table, 24"x36"x39-1/2" high, fixed height, 1-3/4" thick strips, solid wood, maple butcher block. Textured black painted frame. 3 coats catalyzed lacquer on top and sides, 1 coat on the bottom. Wisconsin Bench, No Substitute.



KCDA No.	U/M
70292	Ea

**Virco Non Adjustable Office Tables**

General table, charcoal black frame. Strong enough to hold fax machines, desk-top copiers or other bulky office equipment. High pressure laminate work surface. All steel apron and 1-1/4" non-adjustable square steel legs. Virco, No Substitute.



KCDA No.	Size	Top	Mfg. No.	U/M
78364	20"dx60"lx30"h	Oak	682060	Ea
78365	30"dx72"lx30"h	Oak	683072	Ea
78525	30"dx72"lx30"h	Grey Nebula	683072	Ea

**TABLES / SCIENCE**

**Science Tables**

Hardwood construction oak frame, HPL (high pressure laminate) black top, with adjustable glides, rubber boots sold separately. These tables have non-adjustable legs, boots not included. Qualifying Standard: Fleetwood.



• For leg boots see KCDA No. 71190.

KCDA No.	Size	U/M
71191	54"W x30"Hx24"D	Ea
71186	60"W x30"Hx24"D	Ea
71187	72"W x30"Hx30"D	Ea

**Science Table Boots**

Plastic boots are designed to protect lower 2-1/2" of legs against water damage incurred during mopping of floors. Qualifying Standard: Fleetwood.



• Fits KCDA Nos. 71186, 71187 & 71191.

KCDA No.	U/M
71190	4/Pkg

**\* Don't See What You Need Here?**  
We can source it for you.

Contact KCDA customer service with the details at [customerservice@kcda.org](mailto:customerservice@kcda.org) or 800-422-5019.



Please visit our website [www.kcda.org](http://www.kcda.org) for current prices on all products listed in the KCDA Reference Guide.